



NEXT LEVEL
APPAREL™

WHAT'S NOW. WHAT'S NEXT.

2021 CATALOG



MEN'S • WOMEN'S • UNISEX • YOUTH



OUR NLA DNA

At Next Level Apparel, we are passionate about our customers. Who they are, what they need, and how we can contribute to their success story.

We know that a t-shirt is more than a piece of clothing - it's a way of connecting to your communities. It's their business. Our comfort. Your style.

We're committed to making tees that anyone and everyone can be proud of. We want to make apparel that distributors are excited to carry, decorators can print on consistently, and customers from around the globe feel good wearing.

Our team is fueled by a purpose-driven mindful lifestyle. It's critical that our processes are the most ethical and eco-friendly so that feeling good also means wearing good.

From our local roots in Southern California to our international consumer base, we are dedicated to creating an experience that advances our customers' mission and thrives in what's **NOW** and what's **NEXT**.

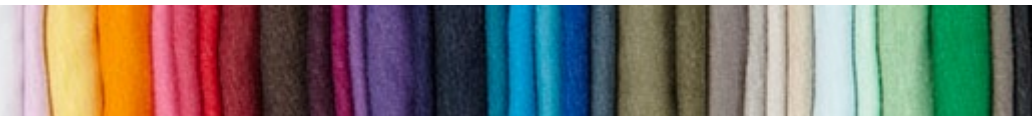


TABLE OF CONTENTS

NLA DNA	2	3600A: Unisex USA Cotton Crew	59	9302: Unisex PCH Fleece Pullover Hoody new	112
Table of Contents	3-4	ECO INTRO	60	9002: Unisex PCH Pullover Crew new	112
2021 New Styles	5	4600: Unisex Eco Heavyweight Tee	61	9700: Unisex PCH Bomber Jacket	113
Style Index	6-7	4210: Unisex Eco Performance Tee	62	INDEX	114
Brand Pillars	8	4212: Youth Eco Performance Crew	63	SIZE CHART	115
Wholesale Partner Network	9	4240: Women's Eco Performance V	63		
Social & Eco Ethos	10	FESTIVAL INTRO	64		
Sustainable Commitment	11	6200: Unisex Poly/Cotton Crew	65		
Brand Timeline	12-13	5030: Women's Festival Scoop	66		
100% COTTON INTRO	14	5040: Women's Festival Sleeveless V	66		
3600: Unisex Cotton Crew	15	5033: Women's Festival Tank	67		
3900: Women's Boyfriend Tee	16	5013: Women's Festival Muscle Tank	67		
3601: Men's Cotton L/S Crew	17	5080: Women's Festival Cali Crop	67		
3633: Unisex Cotton Tank	18	IDEAL INTRO	68		
3602: Unisex Cotton Long Body Crew	19	1800: Unisex Ideal Heavyweight Crew	69		
3605: Unisex Cotton Pocket Crew	19	1801: Unisex Ideal Heavyweight L/S Crew new	69		
3200: Unisex Cotton V	20	1533: Women's Ideal Racerback Tank	70		
3940: Women's Relaxed V	21	1540: Women's Ideal V	71		
3650: Unisex Cotton Raglan Tee	22-23	1510: Women's Ideal Tee	72		
3604: Unisex Cotton Ringer Tee	24-25	1560: Women's Ideal Dolman	73		
3904: Women's Cotton Ringer Tee	24-25	1530: Women's Ideal Flow Tee	74		
3710: Girl's Princess Tee	26	1534: Ideal Color Block Racerback Tank	75		
3310: Youth Cotton Crew	27	1580: Women's Ideal Crop Tee new	76		
3110: Toddler Cotton Tee	27	7481S: Women's Cropped L/S Tee	77		
CVC INTRO	28	6933: French Terry Racerback Tank	78		
6210: Unisex CVC Crew	29	6951: Women's French Terry 3/4 Raglan	79		
6610: Women's CVC Tee	30	6360: Women's Roll Sleeve Dolman	80		
6233: Unisex CVC Tank	31	6333: Unisex Muscle Tank	81		
6240: Men's CVC V	32	6338: Women's Gathered Racerback Tank	82		
6640: Women's CVC Deep V	33	3533: Women's Spandex Jersey Tank	83		
6251: Unisex CVC 3/4 Sleeve Raglan	34	6633: Women's Spandex Jersey Racerback Tank	83		
3352: Youth CVC 3/4 Raglan	35	MOCK TWIST INTRO	84		
3712: Girl's Princess CVC Tee	36	2050: Men's Mock Twist Raglan Crew	85		
3312: Youth CVC Crew	37	2021: Unisex Mock Twist Raglan Hoody	86		
TRI-BLEND INTRO	38	2022: Unisex Mock Twist S/S Hoody	87		
6010: Unisex Tri-Blend Crew	39	INSPIRED DYE INTRO	88		
6710: Women's Tri-Blend Tee	40	7433: Unisex Inspired Dye Tank	89		
6310: Youth Tri-Blend Crew	41	7415: Unisex Inspired Dye Pocket Crew	89		
6040: Men's Tri-Blend V	42	7451: Inspired Dye L/S Pocket Crew	90		
6740: Women's Tri-Blend Deep V	43	7410: Unisex Inspired Dye Crew	90		
6733: Women's Tri-Blend Racerback Tank	44	7401: Unisex Inspired Dye L/S Crew	91		
6734: Women's Tri-Blend Racerback Tank Dress	45	7410S: Unisex Power Crew	91		
6731: Women's Tri-Blend L/S Scoop	46	WAFFLE THERMAL INTRO	92		
6071: Unisex Tri-Blend L/S Crew	47	8201: Unisex Thermal L/S Crew	93		
6760: Women's Tri-Blend Dolman	48	8221: Unisex Thermal Hoody	93		
6730: Women's Tri-Blend Scoop	49	BEACH FLEECE INTRO	94-95		
6021: Unisex Tri-Blend L/S Hoody	50	9000: Unisex French Terry L/S Crew	96		
6072: Men's Tri-Blend L/S Henley	50	9601: Unisex French Terry Zip Hoody	97		
6051: Unisex Tri-Blend 3/4 Raglan	51	9301: Unisex French Terry Pullover Hoody	98-99		
SUEDED INTRO	52	9600: Unisex Denim Fleece Zip Hoody	100		
6410: Unisex Sueded Crew	53	9800: Men's Denim Fleece Jogger	101		
6407: Unisex Sueded Snow Crew	54	80/20 FLEECE INTRO	102-103		
6440: Unisex Sueded V	55	9303: 80/20 Fleece Pullover Hoody	104		
6480: Women's Sueded V	55	9001: Unisex 80/20 Fleece Pocket Crew	105		
6491: Unisex Sueded Zip Hoody	56	9602: Unisex 80/20 Fleece Zip Hoody	106		
6411: Unisex Sueded L/S Crew	57	9103: Youth 80/20 Fleece Zip Hoody	107		
MADE IN THE USA INTRO	58	PCH FLEECE INTRO	108-109		
6010A: Unisex USA Tri-Blend Crew	59	9300: Unisex PCH Pullover Hoody	110		
3900A: Women's USA Boyfriend Tee	59	9603: Women's PCH Raglan Zip Hoody	111		

TABLE OF CONTENTS BY FABRIC

100% COTTON	14	6200: Unisex Poly/Cotton Crew	65
3600: Unisex Cotton Crew	15	5030: Women's Festival Scoop	66
3900: Women's Boyfriend Tee	16	5040: Women's Festival Sleeveless V	66
3601: Men's Cotton L/S Crew	17	5033: Women's Festival Tank	67
3633: Unisex Cotton Tank	18	5013: Women's Festival Muscle Tank	67
3602: Unisex Cotton Long Body Crew	19	5080: Women's Festival Cali Crop	67
3605: Unisex Cotton Pocket Crew	19	IDEAL	68
3200: Unisex Cotton V	20	1800: Unisex Ideal Heavyweight Crew	69
3940: Women's Relaxed V	21	1801: Unisex Ideal Heavyweight L/S Crew NEW	69
3650: Unisex Cotton Raglan Tee	22-23	1533: Women's Ideal Racerback Tank	70
3604: Unisex Cotton Ringer Tee	24-25	1540: Women's Ideal V	71
3904: Women's Cotton Ringer Tee	24-25	1510: Women's Ideal Tee	72
3710: Girl's Princess Tee	26	1560: Women's Ideal Dolman	73
3310: Youth Cotton Crew	27	1530: Women's Ideal Flow Tee	74
3110: Toddler Cotton Tee	27	1534: Ideal Color Block Racerback Tank	75
CVC	28	1580: Women's Ideal Crop Tee NEW	76
6210: Unisex CVC Crew	29	LIGHTWEIGHT FRENCH TERRY	78
6610: Women's CVC Tee	30	6933: French Terry Racerback Tank	78
6233: Unisex CVC Tank	31	6951: Women's French Terry 3/4 Raglan	79
6240: Men's CVC V	32	LIGHTWEIGHT COTTON/POLY	80
6640: Women's CVC Deep V	33	6360: Women's Roll Sleeve Dolman	80
6251: Unisex CVC 3/4 Sleeve Raglan	34	6338: Women's Gathered Racerback Tank	82
3352: Youth CVC 3/4 Raglan	35	6333: Unisex Muscle Tank	81
3712: Girl's Princess CVC Tee	36	SPANDEX	83
3312: Youth CVC Crew	37	3533: Women's Spandex Jersey Tank	83
TRI-BLEND	38	6633: Women's Spandex Jersey Racerback Tank	83
6010: Unisex Tri-Blend Crew	39	MOCK TWIST	84
6710: Women's Tri-Blend Tee	40	2050: Men's Mock Twist Raglan Crew	85
6310: Youth Tri-Blend Crew	41	2021: Unisex Mock Twist Raglan Hoody	86
6040: Men's Tri-Blend V	42	2022: Unisex Mock Twist S/S Hoody	87
6740: Women's Tri-Blend Deep V	43	INSPIRED DYE	88
6733: Women's Tri-Blend Racerback Tank	44	7433: Unisex Inspired Dye Tank	89
6734: Women's Tri-Blend Racerback Tank Dress	45	7415: Unisex Inspired Dye Pocket Crew	89
6731: Women's Tri-Blend L/S Scoop	46	7451: Inspired Dye L/S Pocket Crew	90
6071: Unisex Tri-Blend L/S Crew	47	7410: Unisex Inspired Dye Crew	90
6760: Women's Tri-Blend Dolman	48	7401: Unisex Inspired Dye L/S Crew	91
6730: Women's Tri-Blend Scoop	49	7410S: Unisex Power Crew	91
6021: Unisex Tri-Blend L/S Hoody	50	WAFFLE THERMAL	92
6072: Men's Tri-Blend L/S Henley	50	8201: Unisex Thermal L/S Crew	93
6051: Unisex Tri-Blend 3/4 Raglan	51	8221: Unisex Thermal Hoody	93
SUEDED	52	BEACH FLEECE	94-95
6410: Unisex Sueded Crew	53	9000: Unisex French Terry L/S Crew	96
6407: Unisex Sueded Snow Crew	54	9601: Unisex French Terry Zip Hoody	97
6440: Unisex Sueded V	55	9301: Unisex French Terry Pullover Hoody	98-99
6480: Women's Sueded V	55	9600: Unisex Denim Fleece Zip Hoody	100
6491: Unisex Sueded Zip Hoody	56	9800: Men's Denim Fleece Jogger	101
6411: Unisex Sueded L/S Crew	57	80/20 FLEECE	102-103
MADE IN THE USA	58	9303: 80/20 Fleece Pullover Hoody	104
6010A: Unisex USA Tri-Blend Crew	59	9001: Unisex 80/20 Fleece Pocket Crew	105
3900A: Women's USA Boyfriend Tee	59	9602: Unisex 80/20 Fleece Zip Hoody	106
3600A: Unisex USA Cotton Crew	59	9103: Youth 80/20 Fleece Zip Hoody	107
ECO	60	PCH FLEECE	108-109
4600: Unisex Eco Heavyweight Tee	61	9300: Unisex PCH Pullover Hoody	110
4210: Unisex Eco Performance Tee	62	9603: Women's PCH Raglan Zip Hoody	111
4212: Youth Eco Performance Crew	63	9302: Unisex PCH Fleece Pullover Hoody NEW	112
4240: Women's Eco Performance V	63	9002: Unisex PCH Pullover Crew NEW	112
FESTIVAL	64	9700: Unisex PCH Bomber Jacket	113

NEW 2021 STYLES



STYLE INDEX

WOMEN



YOUTH



MEN



STYLE INDEX

UNISEX



3600
Unisex Cotton Crew
pg.15



3600A
Unisex USA Cotton Crew
pg.59



3605
Unisex Cotton Pocket Crew
pg.19



3604
Unisex Cotton Ringer Tee
pg.24-25



3650
Unisex Cotton Raglan Tee
pg.22-23



3200
Unisex Cotton V
pg.20



3633
Unisex Cotton Tank
pg.18



3602
Unisex Cotton Long Body Crew
pg.19



6407
Unisex Sueded Snow S/S Crew
pg.54



6251
Unisex CVC 3/4 Sleeve Raglan
pg.34



6210
Unisex CVC Crew
pg.29



6233
Unisex CVC Tank
pg.31



6410
Unisex Sueded Crew
pg.53



6440
Unisex Sueded V
pg.55



6411
Unisex Sueded L/S Crew
pg.57



6010
Unisex Tri-Blend Crew
pg.39



6010A
Unisex USA Tri-Blend Crew
pg.59



6071
Unisex Tri-Blend L/S Crew
pg.47



6051
Unisex Tri-Blend 3/4 Raglan
pg.51



6021
Unisex Tri-Blend L/S Hoody
pg.50



6200
Unisex Poly/Cotton Crew
pg.65



4600
Unisex Eco Heavyweight Tee
pg.61



4210
Unisex Eco Performance Tee
pg.62



6333
Unisex Muscle Tank
pg.81



2022
Unisex Mock Twist Short Sleeve Hoody
pg.87



2021
Unisex Mock Twist Raglan Hoody
pg.86



8221
Unisex Thermal Hoody
pg.93



8201
Unisex Thermal L/S Crew
pg.93



7410S
Unisex Power Crew
pg.91



1800
Unisex Ideal Heavyweight Crew
pg.69



NEW 1801
Unisex Ideal Heavyweight L/S Crew
pg.69



7410
Unisex Inspired Dye Crew
pg.90



7415
Unisex Inspired Dye Pocket Crew
pg.89



7401
Unisex Inspired Dye L/S Crew
pg.91



7451
Unisex Inspired Dye L/S Pocket Crew
pg.90



7433
Unisex Inspired Dye Tank
pg.89



6491
Unisex Sueded Zip Hoody
pg.56



9000
Unisex French Terry L/S Crew
pg.96



9301
Unisex French Terry Pullover Hoody
pg.98-99



9601
Unisex French Terry Zip Hoody
pg.97



9001
Unisex 80/20 Fleece Crew with Pocket
pg.105



9303
Unisex 80/20 Fleece Pullover Hoody
pg.104



9602
Unisex 80/20 Fleece Zip Hoody
pg.106



NEW 9002
Unisex PCH Basic Pullover Hoody
pg.112



9300
Unisex PCH Pullover Hoody
pg.110



NEW 9302
Unisex PCH Classic Pullover Hoody
pg.112



9700
Unisex PCH Bomber Jacket
pg.113



9600
Denim Unisex Fleece Zip Hoody
pg.100

OBSESSED WITH QUALITY

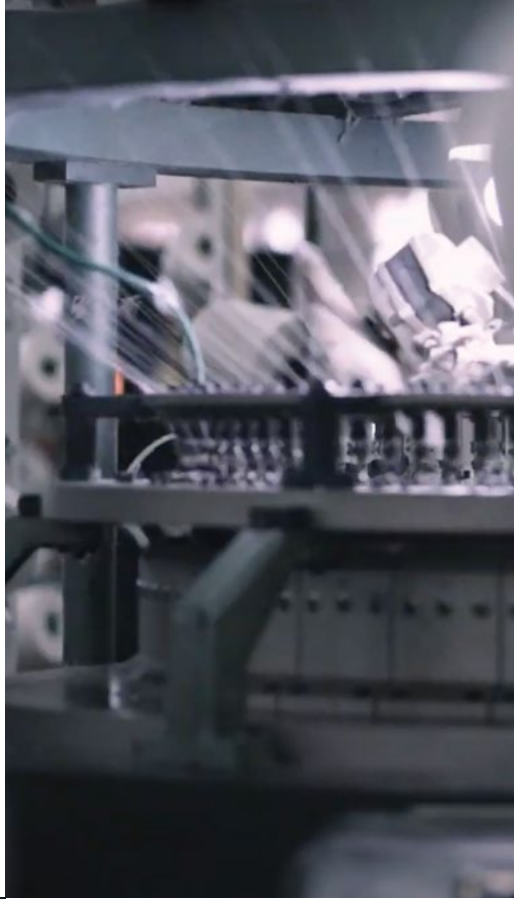
We're on a quest to make the best t-shirts we possibly can. We are committed to ensuring quality in every fabric we use, every cut we design, and every t-shirt we produce. We've taken care of all the details, so you don't have to.

SUSTAINABILITY

We embrace the protection of our beautiful planet and are relentless in finding the best options in every area of our business. Whether through recycling, paperless offices or the use of organic and recycled materials in many of our products, we are committed to reducing our carbon footprint.

PASSIONATE ABOUT CUSTOMERS

We're motivated by making our customers lives better and effortless. We're genuinely interested in hearing about our customers' needs and improving our products and processes accordingly. When our customers win, we win.



COMMITTED TO OUR COMMUNITIES

The communities where we work are our homes. Our neighbors, family and friends live, work and play here. Whether Gardena, CA or our manufacturing facilities around the world, we want to have a positive impact on the lives of our people and our communities.

DIVERSITY

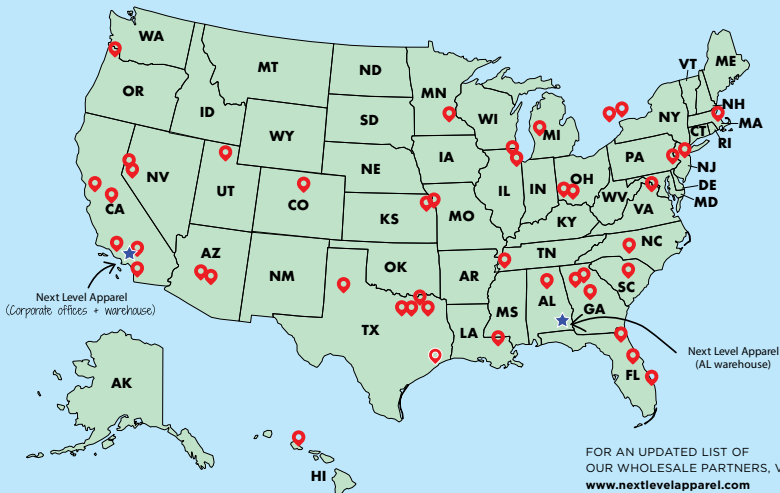
A diverse workforce enhances creativity, productivity and happiness in the workplace. We hire the best and the brightest, resulting in a diverse team across gender, culture, ethnicity, religion and ideology. This commitment has always made NLA a stronger, better, smarter organization.



NEXT LEVEL
APPAREL

WHOLESALE PARTNER NETWORK

TO START WEARING, LOVING, AND SELLING NEXT LEVEL APPAREL,
CONTACT ANY OF THE WHOLESALE PARTNERS IN OUR NETWORK TODAY:



FULL LINE



California, Kansas,
Texas, Illinois, Massachusetts, Pennsylvania,
Georgia, Florida, Ontario CAN
www.alphabroder.com



Alabama, Florida, Texas,
Puerto Rico
www.tsfsportswear.com



California
www.missionimprintables.com



Utah
www.slctivegear.com



California, Ohio, Colorado, Texas,
Pennsylvania, Oregon
www.tscapparel.com



North Carolina
www.carolinamade.com



Virginia
www.orderacc.com



Arizona
www.mccrearystees.com



Texas, Tennessee
www.statononline.com

PARTIAL LINE

ONE STOP.

Michigan
www.onestopinc.com



New Jersey, Illinois,
Kansas, Texas, Georgia,
Nevada
www.ssactivegear.com

SANMAR

Arizona, Florida, Minneapolis,
Nevada, New Jersey, Ohio, Texas
www.sanmar.com



Hawaii
www.americant-shirt.com



South Carolina, California
www.printgear.com



Louisiana
www.wholesaleprintables.com

INTERNATIONAL



Ontario, CAN
www.alphabroder.com
(*not shown on map)



Ontario, CAN
www.catalystgroupbrands.com
(*not shown on map)



Queensland, AUS*
www.legendlife.com.au
(*not shown on map)



Devon, UK*
www.pencarrie.com
(*not shown on map)



Germany, Austria, Belgium, Swit-
zerland, Czech Republic, Poland,
Netherlands, Denmark, Sweden*
www.i-shop-team.de
(*not shown on map)

OUR SOCIAL & ECO ETHOS

We strive to create a culture of continuous improvement for sustainable & safe manufacturing, while minimizing our environmental footprint, empowering and caring for our workforce and contributing positively to our global communities. Our journey creates a better world and is foundational to our ethos.

Don't just live in our t-shirts, make a difference.



OUR COMMITMENT TO THE ENVIRONMENT & OUR WORKERS

Next Level Apparel was voted in by the Fair Labor Association (FLA) as an approved Participating Company in October 2019. It is a badge that recognizes the commitment and diligence that has been put into our social responsibility and social compliance program, as well as the focus on continuous improvement as we move forward.

We have made it our mission to collaborate with the FLA and fellow affiliates to improve workers lives worldwide.

Next Level Apparel used the UN Sustainable Development Goals (SDG's) as a blueprint to help guide us down this path of creating a better world, and we believe we can make a significant impact in the following areas:

Responsible Consumption and Production
Quality Education
Social and Community Outreach Programs

Our mission is to create quality apparel while also recognizing that we have an opportunity to make a positive impact on our people and our planet.



A LEGACY OF PRODUCT INNOVATION

6200

Created as a premium poly/cotton t-shirt that can be sublimated

2003

6210

Introduced the first cvc shirt in wholesale

Launch of

**Ideal
Collection**

2015

Launch of

**Inspired
Dye**

2017

2009

6410

Introduced the original sueded tee into wholesale

Launch of

**Fleece
Collection**

2018

3600

launched our flagship 100% combed ring-spun cotton t-shirt

Launch of

**USA Made
Collection**



Became
FLA
affiliated brand

COVID-19 pivot to
**Face Mask &
Neck Gaiter**
manufacturing to
wholesale market

Appointed as an
Official
**City of Hope
Philanthropic
Partner**

2019

2020

Launch of
**Eco
Collection**

Launch of
**Festival
Collection**

Pivot to PPE
Initiated members of
the US government
consortium creating
FDA approved
and HHS certified
surgical masks to the
National Government
Stockpile

Launch of the
**1800 Ideal
Heavyweight
Crew**

100% COMBED RING-SPUN COTTON



3600 & 3900

THE PERFECT PRINTING STAPLE.

STRETCH AND SOFTNESS.
COMFORTABLE AND LIGHTWEIGHT.
PRINTERS PREFERRED FABRIC FOR DISCHARGE,
DTG PRINTING, HEAT-TRANSFER AND SCREEN-PRINTING.



3600 | UNISEX COTTON CREW

Fine Jersey. 32 single 145g/4.3oz 100% Combed Ring-Spun Cotton (Heather Gray 90% Cotton/10% Poly). Our best-selling ring-spun tee. The perfect printing staple. Set-in Collar 1x1 Baby Rib. Side Seamed. Tear Away Label.

XS-3XL; Select colors 4XL





3900 | WOMEN'S BOYFRIEND TEE

Fine Jersey. 32 single 145g/4.3oz 100% Combed Ring-Spun Cotton (Heather Gray 90% Cotton/10% Poly.) Her version of his shirt. Top selling ring-spun tee in a wide variety of colors. Side seamed. Set-in Collar 1x1 Baby Rib. Tear Away Label.

XS-3XL





3601 | MEN'S COTTON L/S CREW

Fine Jersey. 32 single 145g/4.3oz 100% Combed Ring-Spun Cotton (Heather Gray 90% Cotton/10% Poly). Top selling ring-spun fabric, a perfect printing staple. Hemmed sleeves. 1x1 baby-rib set-in collar. Side seamed. Tear away label.

S-2XL



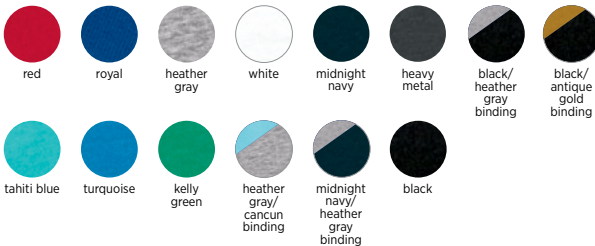


3633 | UNISEX COTTON TANK

Fine Jersey. 32 single 145g/4.3oz 100% Combed Ring-Spun Cotton (Heather Gray 90% Cotton/10% Poly). Top selling ring-spun fabric. Self-fabric binding, contrasting where noted. Side seamed. Tear Away Label.

XS-2XL

Colors: Body/Binding





**3602 | UNISEX COTTON
LONG BODY CREW**

Fine Jersey. 32 single 145g/4.3oz 100% Combed Ring-Spun Cotton (Heather Gray 90% Cotton/10% Poly). Top selling ring-spun fabric. 1x1 baby-rib set-in collar. Curved bottom hem. Side seamed. Tear away label.

XS-3XL



black heather gray white midnight navy



**3605 | UNISEX COTTON POCKET
CREW**

Fine Jersey. 32 single 145g/4.3oz 100% Combed Ring-Spun Cotton (Heather Gray 90% Cotton/10% Poly). Top selling ring-spun fabric, a perfect printing staple. Hemmed sleeves. 1x1 baby-rib set-in collar. Side seamed. Tear away label.

XS-3XL



natural red cool blue midnight navy heavy metal black
white heather gray maroon military green forest green



3200 | UNISEX COTTON V

Fine Jersey. 32 single 145g/4.3oz 100% Combed Ring-Spun Cotton (Heather Gray 90% Cotton/10% Poly). Top selling ring-spun fabric, a perfect printing staple. Side seamed. Set-in collar 1x1 baby rib. Tear away label.

XS-2XL



banana cream



light blue



tahiti blue



sand



cardinal



midnight navy



indigo



heavy metal



red



royal



kelly green



heather gray



black



white



3940 | WOMEN'S RELAXED V

Fine Jersey. 100% Combed Ring-Spun Cotton. 32 single, 145g/4.3oz. (Heather Gray 90% Cotton/10% Poly)
Top selling ring-spun fabric, a perfect printing staple. Set-in collar 1x1 baby rib. Relaxed fit. Side seamed. Tear away label.

XS-3XL



red



royal



midnight
navy



heavy metal



heather gray



black



desert
pink



white



3650 | UNISEX COTTON RAGLAN TEE

Fine Jersey. 32 single 145g/4.3oz 100% Combed Ring-Spun Cotton (Heather Gray 90% Cotton/10% Poly). Contrast raglan sleeves and bound neck. Side seamed. Tear Away Label.

XS-3XL

Colors: sleeve/body



maroon/natural



forest green/natural



midnight navy/
natural



black/natural



black/white



black/black



natural/black



warm gray/black



antique gold/black



black/heather gray



royal/heather gray



natural/red



3604 | UNISEX COTTON RINGER TEE

Fine Jersey. 32 single 145g/4.3oz 100% Combed Ring-Spun Cotton (Heather Gray 90% Cotton/10% Poly). Contrast 1x1 baby rib, bound collar and sleeves. Side seamed. Tear away label.

XS-3XL

Colors: Body/Sleeve



natural/black



natural/maroon



natural/forest green



natural/midnight navy



white/black



heather gray/black



black/natural

3904 | WOMEN'S COTTON RINGER TEE

Fine Jersey. 32 single 145g/4.3oz 100% Combed Ring-Spun Cotton. Contrast 1x1 baby rib, bound collar and sleeves. Side seamed. Tear away label.

S-2XL

Colors: Body/Sleeve



natural/
midnight navy

white/
black

natural/
maroon



3710 | GIRL'S PRINCESS TEE

Fine Jersey. 32 single 145g/4.3oz 100% Combed Ring-Spun Cotton (Heather Gray 90% Cotton/10% Poly). Top selling ring-spun fabric in a variety of colors. Side seamed and tailored for girls sized 3/4 through 14/16. Set-in collar with front cover stitch 1x1 baby rib. Tear away label.

XS(3/4)-XL(14/16)



3310 | YOUTH COTTON CREW

Fine Jersey. 32 single 145g/4.3 oz 100% Combed Ring-Spun Cotton (Heather Gray 90% Cotton/10% Poly). Top selling ring-spun fabric in a variety of colors. Side seamed. Set-in collar 1x1 baby rib. Tear away label.

XS(4/5)-XL(14/16)



3110 | TODDLER COTTON TEE

Fine Jersey. 32 single 145g/4.3oz 100% Combed Ring-Spun Cotton (Heather Gray 90% Cotton/10% Poly). Set in collar 1x1 baby rib. Hemmed sleeves. Side seamed. Tear Away Label.

2T, 3T, 4T



THE ORIGINAL CVC



6210

THE CREATORS OF THE INDUSTRY FAVORITE CVC.

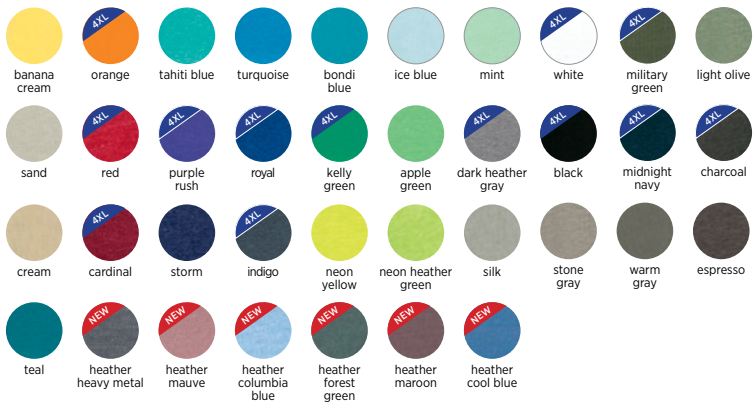
THE CONSISTENT AND DURABLE BLEND OF HEATHERED COTTON/POLY.
PRINTERS PREFERRED FABRIC FOR SCREEN-PRINTING
AND HEAT-TRANSFER.



6210 | UNISEX CVC CREW

CVC Jersey. 32 single 145g/4.3oz 60% Combed Ring-Spun Cotton 40% Poly. Top of the line fabric that stands up to consistent wear without sacrificing fit or feel. Perfect for all your favorite heathered colors plus solid white and black. Set-in Collar 1x1 CVC Baby Rib. Side seamed. Tear Away Label.

XS-3XL; Select colors 4XL

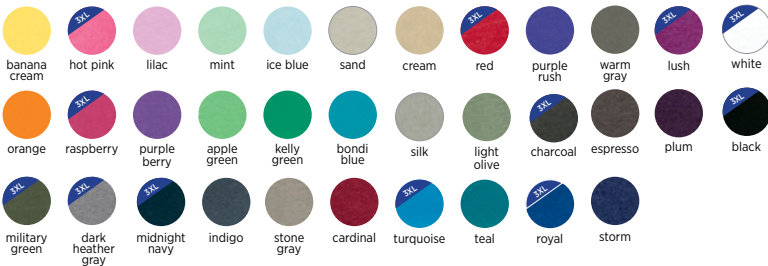




6610 | WOMEN'S CVC TEE

CVC Jersey, 32 single 145g/4.3oz 60% Combed Ring-Spun Cotton 40% Poly. Top of the line fabric that stands up to consistent wear without sacrificing fit or feel. Perfect for all your favorite heathered colors plus solid white and black. Side seamed with feminine curve. Set-in collar 1x1 CVC baby rib. Tear away label.

XS-2XL; Select colors 3XL





6233 | UNISEX CVC TANK

CVC Jersey. 32 single 145g/4.3oz 60% Combed Ring-Spun Cotton 40% Poly. Top of the line fabric that stands up to consistent wear without sacrificing fit or feel. Perfect in heathered colors. Self-fabric binding. Side seamed. Tear away label.

XS-2XL



ice blue



dark
heather
gray



military
green



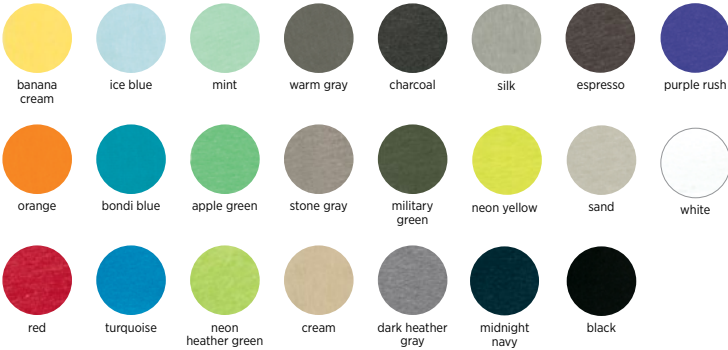
charcoal



6240 | MEN'S CVC V

CVC Jersey. 32 single 145g/4.3oz 60% Combed Ring-Spun Cotton 40% Poly. Top of the line fabric that stands up to consistent wear without sacrificing fit or feel. Perfect for all your favorite heathered colors plus solid white and black. Set-in collar. Side seamed. Set-in collar 1x1 CVC baby rib. Tear away label.

S-2XL

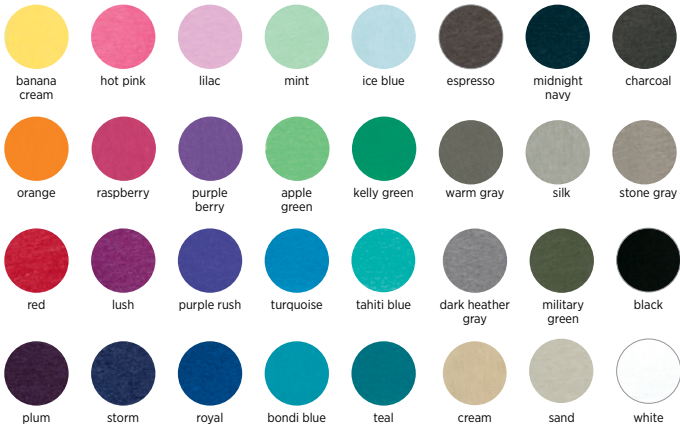




6640 | WOMEN'S CVC DEEP V

CVC Jersey. 32 single 145g/4.3oz 60% Combed Ring-Spun Cotton 40% Poly. Top of the line fabric that stands up to consistent wear without sacrificing fit or feel. Perfect for all your favorite heathered colors plus solid white and black. Side seamed with feminine curve. Tear away label. Set-in collar 1x1 baby rib. Tear away label.

S-2XL



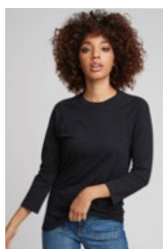
Colors: Sleeve/Body



military green/
cream



black/
dark heather gray



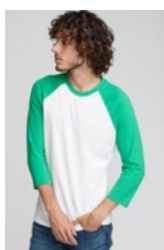
black/
black



royal/
white



red/
white



kelly green/
white



hot pink/
white



indigo/
silk



black/
olive



midnight navy/
dark heather gray



black/
white

6251 | UNISEX CVC 3/4 SLEEVE RAGLAN

CVC Jersey, 60% Combed Ring-Spun Cotton 40% Polyester 32 single, 145 grams/4.3oz. Top of the line fabric that stands up to consistent wear without sacrificing fit or feel. Collar and cover stitch are the color of the sleeves. Set in collar. Tear away label.

XS-3XL

*Companion youth style 3352.



3352 | YOUTH CVC 3/4 RAGLAN

CVC Jersey. 32 single 145g/4.3oz 60% Combed Ring-Spun Cotton 40% Poly. Top of the line fabric that stands up to consistent wear without sacrificing fit or feel. Collar and cover stitch are the color of the sleeves. Set-in collar. Side seamed. Tear away label.

XS(4/5) - XL(14/16)

*Companion adult style 6251

Colors: Sleeve/Body





3712 | GIRL'S PRINCESS CVC TEE

CVC Jersey. 32 single 145g/4.3oz 60% Combed Ring-Spun Cotton 40% Poly. Top of the line fabric that stands up to consistent wear without sacrificing fit or feel. Side seamed and tailored for girls. Set-in collar with front cover stitch 1x1 CVC baby rib. Tear away label.

XS(3/4) - XL(14/16)



lilac



banana
cream



mint



ice blue



silk



purple berry



orange



apple green



neon
heather pink



neon heather
orange



neon
yellow



neon heather
green



bondi blue



raspberry



3312 | YOUTH CVC CREW

CVC Jersey. 32 single 145g/4.3oz 60% Combed Ring-Spun Cotton 40% Poly. Top of the line fabric that stands up to consistent wear without sacrificing fit or feel. Perfect for your favorite heathered colors plus solid white and black. Side seamed. Set-in collar 1x1 CVC baby rib. Tear away label.

XS(4/5) - XL(14/16)



TRI-BLEND



SOFT. LIKE REALLY SOFT.

VINTAGE LOOK WITH HEATHERED COLORS, STRETCH, AND RECOVERY.
PRINTERS PREFERRED FABRIC FOR SCREEN-PRINTING.



6010 | UNISEX TRI-BLEND CREW

Tri-Blend Jersey. 32 single 145g/4.3oz 50% Poly 25% Combed Ring-Spun Cotton 25% Rayon. A perfect blend that is incredibly soft with great drape, stretch and recovery. Heathered colors with a vintage look. Side seamed. 1x1 tri-blend baby rib set-in collar. Tear away label.

XS-3XL





6710 | WOMEN'S TRI-BLEND TEE

Tri-Blend Jersey. 32 single 145g/4.3oz 50% Poly 25% Combed Ring-Spun Cotton 25% Rayon. A perfect blend that is incredibly soft with great drape, stretch and recovery. Heathered colors with a vintage look. Side seamed with feminine curve. 1x1 tri-blend baby rib set-in collar with front cover stitch. Tear away label.

S-2XL





6310 | YOUTH TRI-BLEND CREW

Tri-Blend Jersey. 32 single 145g/4.3oz 50% Poly 25% Combed Ring-Spun Cotton 25% Rayon. Kids will appreciate this incredibly soft, lightweight fabric. Heathered colors with a great vintage look. Side seamed. 1x1 tri-blend baby rib set-in collar. Tear away label.

XS(4/5)-XL(14/16)



tahiti blue



vintage turquoise



vintage royal



vintage red



premium heather



vintage navy



vintage black



heather white



6040 | MEN'S TRI-BLEND V

Tri-Blend Jersey. 32 single 145g/4.3oz 50% Poly 25% Combed Ring-Spun Cotton 25% Rayon. A perfect blend that is incredibly soft with great drape, stretch and recovery. Heathered colors with a vintage look. Side seamed. 1x1 tri-blend baby rib set-in collar. Tear away label.

S-2XL



vintage
turquoise



vintage
royal



envy



heather
white



vintage red



vintage
navy



military
green



premium
heather



vintage
black



6740 | WOMEN'S TRI-BLEND DEEP V

Tri-Blend Jersey. 32 single 145g/4.3oz 50% Poly 25% Combed Ring-Spun Cotton 25% Rayon. A perfect blend that is incredibly soft with great drape, stretch and recovery. Heathered colors with a vintage look. Side seamed with feminine curve. 1x1 tri-blend baby rib set-in collar. Tear away label.

S-2XL





6733 | WOMEN'S TRI-BLEND RACERBACK TANK

Tri-Blend Jersey. 32 single 145g/4.3oz 50% Poly 25% Combed Ring-Spun Cotton 25% Rayon. A perfect blend that is incredibly soft with great drape, stretch and recovery. Heathered colors with a vintage look. Flat-lock finished hems for a raw edge look. Side seamed. Tear away label.

XS-2XL





6734 | WOMEN'S TRI-BLEND RACERBACK TANK DRESS

Tri-Blend Jersey. 32 single 145g/4.3oz 50% Poly 25% Combed Ring-Spun Cotton 25% Rayon. A perfect blend that is incredibly soft with great drape, stretch and recovery. Versatile silhouette works as a dress or cover-up. Heathered colors with a vintage look. Self-fabric binding. Side seamed. Tear away label.

XS-2XL



premium
heather



indigo



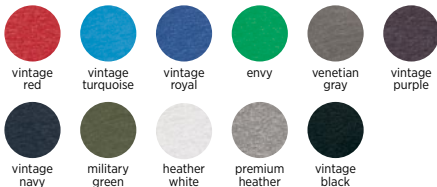
vintage
black



6731 | WOMEN'S TRI-BLEND L/S SCOOP

Tri-Blend Jersey. 32 single 145g/4.3oz 50% Poly 25% Combed Ring-Spun Cotton 25% Rayon. A perfect blend that is incredibly soft with great drape, stretch and recovery. Heathered colors with a vintage look. Side seamed. Flattering scoop neckline. 1x1 tri-blend baby rib set-in collar with front cover stitch. Tear away label.

S-2XL





6071 | UNISEX TRI-BLEND L/S CREW

Tri-Blend Jersey. 32 single 145g/4.3oz 50% Poly 25% Combed Ring-Spun Cotton 25% Rayon. A perfect blend that is incredibly soft with great drape, stretch and recovery. Heathered colors with a vintage look. Side seamed. 1x1 tri-blend baby rib set-in collar. Hemmed sleeves. Tear away label.

XS-2XL





6760 | WOMEN'S TRI-BLEND DOLMAN

Tri-Blend Jersey. 32 single 145g/4.3oz 50% Poly 25% Combed Ring-Spun Cotton 25% Rayon. Heathered colors with a vintage look. Dolman has a flowy fit that is flattering for all. Side seamed. 1x1 tri-blend baby rib set-in collar with front cover stitch. Tear away label.

XS-3XL





6730 | WOMEN'S TRI-BLEND SCOOP

Tri-Blend Jersey. 32 single 145g/4.3oz 50% Poly 25% Combed Ring-Spun Cotton 25% Rayon. A perfect blend that is incredibly soft with great drape, stretch and recovery. Heathered colors with a vintage look. Side seamed with feminine curve. Very flattering scoop neckline. 1x1 tri-blend baby rib set-in collar with front cover stitch. Tear away label.

S-2XL



vintage
light orange



vintage
lilac



vintage
turquoise



envy



military
green



vintage
navy



vintage
purple



vintage
red



vintage
shocking
pink



purple
rush



vintage
royal



heather
white



premium
heather



vintage
black



6021 | UNISEX TRI-BLEND L/S HOODY

Tri-Blend Jersey. 32 single 145g/4.3oz 50% Poly 25% Combed Ring-Spun Cotton 25% Rayon. A perfect blend that is incredibly soft with great drape, stretch and recovery. Heathered colors with a vintage look. Side seamed. 1x1 tri-blend baby rib cuffs. Three piece, single layer hood. Tear away label.

XS-2XL



6072 | MEN'S TRI-BLEND L/S HENLEY

Tri-Blend Jersey. 32 single 145g/4.3oz 50% Poly 25% Combed Ring-Spun Cotton 25% Rayon. A perfect blend that is incredibly soft with great drape, stretch and recovery. Heathered colors with a vintage look. Side seamed. Dyed to match buttons, 3 button placket. Raglan sleeves, hemmed. Tear away label.

S-2XL





6051 | UNISEX TRI-BLEND 3/4 RAGLAN

Tri-Blend Jersey. 32 single 145g/4.3oz 50% Poly 25% Combed Ring-Spun Cotton 25% Rayon. A perfect blend that is incredibly soft with great drape, stretch and recovery. Heathered colors with a vintage look. Side seamed. 1x1 tri-blend baby rib set-in collar. Collar and cover stitch are the color of the sleeves. Curved bottom hem, flat-lock finish. Tear away label.

XS-3XL

Colors: Sleeve/Body



THE ORIGINAL SUEDED



6407 & 6411

IRRESISTIBLE SOFT AND VELVETY FEEL.

THE UNIQUE BRUSHED FINISHED REMINISCENT OF PEACH-FUZZ.
PRINTERS PREFERRED FABRIC FOR SCREEN-PRINTING AND HEAT-TRANSFER.



6410 | UNISEX SUEDED CREW

Sueded Jersey. 32 single 145g/4.3oz 60% Combed Ring-Spun Cotton 40% Poly. Experience the soft velvet feel and the unique brushed finish of this incredible fabric. Prints like a dream. Available in solid and heathered colors. 1x1 sueded baby-rib set-in collar. Side seamed. Tear away label.

XS-3XL





6407 | UNISEX SUEDED SNOW CREW

Sueded Jersey. 32 single 145g/4.3oz 60% Combed Ring-Spun Cotton 40% Poly. Experience the soft velvet feel and the unique brushed finish of this incredible fabric. New look, same incredible velvet soft feel of the original sueded crew. 1x1 sueded baby rib set-in collar. Side seamed. Tear away label.

XS-3XL



snow
heather
red



snow
heather
green



snow
heather
blue



snow
heather
indigo



snow
heather
gray



6440 | UNISEX SUEDED V

Sueded Jersey. 32 single 145g/4.3oz 60% Combed Ring-Spun Cotton 40% Poly. Velvet soft feel and unique brushed finish. Prints like a dream. 1x1 sueded baby rib set-in collar. Side seamed. Tear away label.

XS-2XL



6480 | WOMEN'S SUEDED V

Sueded Jersey. 32 single 145g/4.3oz 60% Combed Ring-Spun Cotton 40% Poly. Velvet soft feel and unique brushed finish. Prints like a dream. 1x1 sueded baby-rib set-in collar with front cover stitch. Side seamed. Tear away label.

XS-2XL





6491 | UNISEX SUEDED ZIP HOODY

Sueded Jersey. 32 single 145g/4.3oz 60% Combed Ring-Spun Cotton 40% Poly. Velvet soft feel and unique brushed finish. Prints like a dream. Premium dyed matching #5 YKK kissing zipper, unlined hood, 1x1 ribbing at cuffs and waistband, unisex fit. Tear away label.

XS-3XL





6411 | UNISEX SUEDED L/S CREW

Sueded Jersey. 32 single 145g/4.3oz 60% Combed Ring-Spun Cotton 40% Poly. Set-in Collar 1x1 Sueded Baby Rib. Velvet soft feel and unique brushed finish. Prints like a dream. Side seamed. Set in collar 1x1 sueded baby rib. 2" rib cuffs. Tear away label.

XS-3XL



heather
metal



dark
heather
gray



heather
maroon



heather
cool blue



heather
forest
green



white



royal



black



heather
charcoal



midnight
navy



cardinal

MADE IN THE USA



(Left to Right): 3600A, 3900A & 3600A



FREEDOM TO CHOOSE.

YOUR NLA FAVORITE IN A USA VERSION.
KNIT, DYED, CUT, AND SEWN IN THE USA.



3600A | UNISEX USA COTTON CREW

Fine Jersey. 100% Combed Ring-Spun Cotton (Heather Gray 90% Cotton/10% Poly.) 32 single 145g/4.3oz. Set-in Collar 1x1 baby rib. Knit, dyed, cut and sewn in the USA. Tear away label.

XS-3XL



black



royal



heather
gray



red



military
green



3900A | USA WOMEN'S BOYFRIEND TEE

Fine Jersey. 100% Combed Ring-Spun Cotton (Heather Gray 90% Cotton/10% Poly.) 32 single 145g/4.3oz. Set-in Collar 1x1 baby rib. Knit, dyed, cut and sewn in the USA. Tear away label.

XS-3XL



black



white



heather
gray



6010A | UNISEX USA TRI-BLEND CREW

Tri-Blend Jersey. 25% Combed Ring-Spun Cotton/50% Poly/25% Rayon. 32 single 145g/4.3oz. Set-in Collar 1x1 Tri-Blend baby rib. Knit, dyed, cut and sewn in the USA. Tear away label.

XS-3XL



vintage
black



heather
white



premium
heather



indigo



military
green



vintage
navy



vintage
royal



vintage
red

SUSTAINABLE



EARTH-FRIENDLY, ECO-CONSCIOUS, AND SUSTAINABLE.

FABRIC MADE OF RECYCLED WATER BOTTLES.
PRINTERS PREFERRED FABRIC FOR SCREEN-PRINTING.



4600 | UNISEX ECO HEAVYWEIGHT TEE

60% Organic Cotton 40% Recycled Poly RPET.

20 single 190g/5.6oz. New sustainable heavier weight fabric with a premium soft hand. Made of approximately 4 recycled RPET bottles per shirt. Side seamed. Unisex fit. Tear away label.

XS - 3XL





4210 | UNISEX ECO PERFORMANCE TEE



30% Recycled Cotton 30% Cotton 40% Recycled Poly RPET.

30 single 145g/4.3oz. Performance attributes with an incredibly soft hand. Fabric is made of 70% recycled material and has wicking performance that can draw moisture away from the skin. Made of approximately 3 recycled RPET bottles per shirt. Set in collar 1x1 baby rib. Hemmed sleeves. Side seamed. Unisex fit. Tear away label.

XS - 3XL



white



heather sapphire



cardinal



heavy metal



black



dark heather gray



midnight navy



heather red



heather black



royal pine



**4212 | YOUTH ECO
PERFORMANCE CREW**



30% Recycled Cotton 30% Cotton 40% Recycled Poly RPET.

30 single 145g/4.3oz. 1x1 baby rib set-in collar. Hemmed sleeves. Side seamed. Relaxed fit. Pre-shrunk. Tear away label.

XS(4-5)-XL(14-16)

**4240 | WOMEN'S ECO
PERFORMANCE V**



30% Recycled Cotton 30% Cotton 40% Recycled Poly RPET.

30 single 145g/w4.3oz. 1x1 baby rib set-in collar. Hemmed sleeves. Side seamed. Relaxed fit. Pre-shrunk. Tear away label.

S-3XL



white



heather sapphire



cardinal



heavy metal



black



dark heather gray



midnight navy



heather red



heather black



royal pine

Festival



5030 & 5013

THE SUBLIMATION PRINTER'S DREAM.

LIGHTWEIGHT, SUPER SILKY FABRIC WITH IMPRESSIVE DURABILITY.
PRINTERS PREFERRED FABRIC FOR SUBLIMATION AND SCREEN-PRINTING.



6200 | UNISEX POLY/COTTON CREW

40 single 120g/3.5oz. 65% Poly 35% Combed Ring-Spun Cotton. Set-in collar with front cover stitch. Side seamed. Satin label.

XS-3XL



Festival



5030 | WOMEN'S FESTIVAL SCOOP

40 single 120g/3.5oz. 65% Poly/35% Combed Ring-Spun Cotton. 1x1 baby rib, scoop neckline. Hemmed sleeve. Side seamed. Raw edge, exaggerated droptail hem. Relaxed fit. Stain label.

XS-2XL



5040 | WOMEN'S FESTIVAL SLEEVELESS V

40 single 120g/3.5oz. 65% Poly/35% Combed Ring-Spun Cotton. Self-fabric bound v-neck and armhole. Side seamed. Modestly curved hem. Satin label.

XS-2XL



Festival



5033 | WOMEN'S FESTIVAL TANK

40 single 120g/3.5oz. 65% Poly/35% Combed Ring-Spun Cotton. Scoop neckline. Hemmed neck and armhole. Side seamed. Curved hem. Feminine drape. Satin label.

XS-2XL

5013 | WOMEN'S FESTIVAL MUSCLE TANK

40 single 120g/3.5oz. 65% Poly/35% Combed Ring-Spun Cotton. Relaxed muscle fit tank. Hemmed, oversized armholes. 1x1 baby rib set-in collar. Side seamed. Slight droptail hem. Satin label.

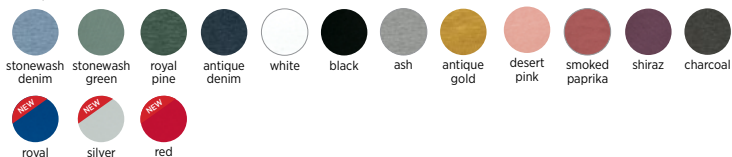
XS-2XL

5080 | WOMEN'S FESTIVAL CALI CROP

40 single 120g/3.5oz. 65% Poly/35% Combed Ring-Spun Cotton. 1x1 baby rib, relaxed crew neckline. Raw edge sleeve and hem. Cropped body with relaxed fit. Side seamed. Satin label.

XS-2XL

5033, 5013 & 5080 colors:



IDEAL



1800

THE PRICE-CONSCIOUS COLLECTION THAT DELIVERS VALUE AND COMFORT.

FINE GAUGE BLENDED FABRIC WITH ULTRA-SOFT HAND AND PERFORMANCE.
PRINTERS PREFERRED FABRIC FOR SCREEN-PRINTING.



OPENING PRICE POINT



TUBULAR CONSTRUCTION



DEEP INVENTORY



PRINTER PREFERRED



1800 | UNISEX IDEAL HEAVYWEIGHT CREW

Heavyweight Jersey. 20 single 100% Cotton 190g/5.6oz. Heavyweight cotton t-shirt in tubular construction. The Street-inspired tee your customer actually wants to wear. Drop shoulder. 1x1 baby-rib set-in collar. Hemmed sleeves. Relaxed fit. Pre-shrunk. Tear away label.

XS-4XL



2021 NEW STYLE

1801 | UNISEX IDEAL HEAVYWEIGHT L/S CREW

Heavyweight Jersey. 20 single 100% Cotton 190g/5.6oz. Heavyweight cotton t-shirt in tubular construction. Street-inspired, heavyweight designed with precision, style, and softness to deliver a tubular tee made of 100% cotton. Meet the new benchmark in street. Drop shoulder, relaxed fit, ideal for DTG, discharge, and screen printing. Tear-away label.

XS-4XL





1533 | WOMEN'S IDEAL RACERBACK TANK

Lightweight Cotton/Poly Jersey. 30 single 135g/4.0oz 60% Combed Ring-Spun Cotton 40% Poly. Lightweight fabric blend. Racerback. Self-fabric binding. Side seamed. Curved hem. Colors are solid unless otherwise noted. Tear away label.

XS-2XL

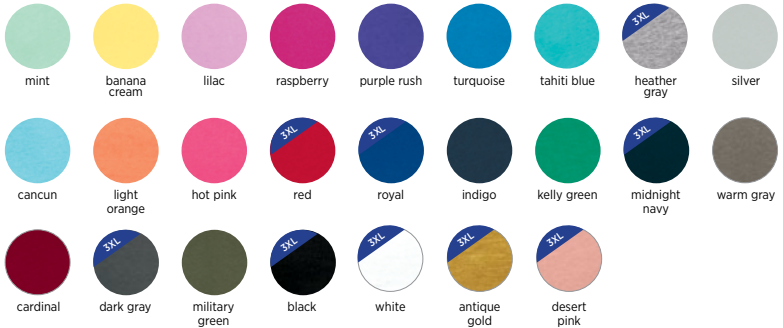




1540 | WOMEN'S IDEAL V

Lightweight Cotton Poly Jersey. 30 single 135g/4.0oz 60% Combed Ring-Spun Cotton 40% Poly. Modest v-neck, set-in collar 1x1 baby rib with front cover stitch. Side seamed. Colors are solid unless otherwise noted. Tear away label.

XS-2XL; select colors in 3XL

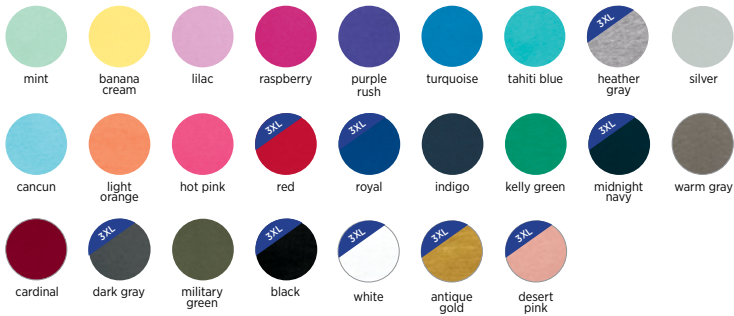




1510 | WOMEN'S IDEAL TEE

Lightweight Cotton Poly Jersey. 30 single 135g/4.0oz 60% Combed Ring-Spun Cotton 40% Poly. Lightweight fabric blend. Relaxed crew neckline, set-in collar 1x1 baby rib with front cover stitch. Side seamed. Colors are solid unless otherwise noted. Tear away label.

XS-2XL; select colors in 3XL





1560 | WOMEN'S IDEAL DOLMAN

Lightweight Cotton Poly Jersey. 30 single 135g/4.0oz 60% Combed Ring-Spun Cotton 40% Poly. Dolman cut has a flowy fit that is flattering for all. Set-in 1x1 baby rib collar. Side seamed. Curved hem. Colors are solid unless otherwise noted. Tear away label.

XS-3XL



white



black



military
green



dark gray



hot pink



turquoise



red



royal



heather
gray



midnight
navy



cancun



mint



1530 | WOMEN'S IDEAL FLOW TEE

Lightweight Cotton Poly Jersey. 30 single 135g/4.0oz. 60% Combed Ring-Spun Cotton 40% Poly. Relaxed crew neckline, set-in collar 1x1 baby rib. Drop tail with curved front and back hem. Generous cut for a loose fit. Side seamed. Colors are solid unless otherwise noted. Tear away label.

XS-2XL



red



purple
rush



midnight
navy



heather
gray



hot pink



white



black



1534 | WOMEN'S IDEAL COLOR BLOCK RACERBACK TANK

Lightweight Cotton Poly Jersey. 30 single 135g/4.0oz 60% Combed Ring-Spun Cotton 40% Poly. Racerback. Self-fabric binding matches color of back panel. Side seamed. Curved hem. Colors are solid unless otherwise noted. Tear away label.

XS-2XL

colors: front/back and binding



white/black



white/royal



white/hot pink



lilac/heather gray



heather gray/black



turquoise/black



black/red



black/white



black/heather gray



2021 NEW STYLE

1580 | WOMEN'S IDEAL CROP TEE

Lightweight Cotton Poly Jersey. 30 single 135g/4.0oz. 60% Combed Ring-Spun Cotton 40% Poly. Inspired by the casual and cool vibe of Southern California, this crop has a modest cut and a length that hits just below the belly button with a finished hem and neck binding. This silhouette is perfect to be paired with yoga pants for working out or your favorite denim to elevate your everyday look. Tear away label.

XS-3XL





7481S | WOMEN'S CROPPED L/S TEE

100% Combed Ring-Spun Cotton, 24 single, 175g/5.1oz. Pre-washed fabric. Super soft ring spun cotton adds to the unique quality of this mid-weight cotton tee. 1x1 baby rib set-in collar and cuffs. Tear away label.

XS-2XL



desert
pink



red



military
green



midnight
navy



dark heather
gray



black



white



6933 | WOMEN'S FRENCH TERRY RACERBACK TANK

Lightweight French Terry. 30 single 165g/4.9oz 50% Poly 50% Combed Ring-Spun Cotton. Ultra-soft and lightweight. Side seamed. Hemmed neck, armholes, and bottom. Satin label.

XS-2XL

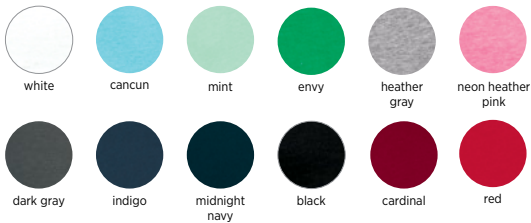




6951 | WOMEN'S FRENCH TERRY 3/4 RAGLAN

Lightweight French Terry. 30 single 165g/4.9oz 50% Poly 50% Combed Ring-Spun Cotton (Heather Gray 93% Cotton/7% Poly). Ultra-soft and lightweight. Raw edge at neck. Side seamed. Self-fabric cuffs and waistband. Satin label.

S-2XL





6360 | WOMEN'S ROLL SLEEVE DOLMAN

Lightweight Cotton Poly Jersey, 30 single 135g/4.0oz 60% Combed Ring-Spun Cotton 40% Poly. Dolman cut has a flowy fit that is flattering for all. Set-in 1x1 baby rib collar. Side seamed. Curved hem. Lightweight fabric blend. Set-in Collar 1x1 Baby Rib. Tear Away Label.

XS-2XL



red



turquoise



heather
gray



white



black



6333 | UNISEX MUSCLE TANK

Lightweight Cotton Poly Jersey. 30 single 135g/4.0oz 60% Combed Ring-Spun Cotton 40% Poly. Set-in Collar 1x1 Baby Rib. Side seamed, hemmed armhole. Tear Away Label.

XS-3XL



red



royal



heather
gray



midnight
navy



heavy
metal



military
green



white



black



6338 | WOMEN'S GATHERED RACERBACK TANK

Lightweight Cotton Poly Jersey. 30 single 135g/4.0oz 60% Combed Ring-Spun Cotton 40% Poly. Set-in Collar 1x1 Baby Rib. Tear Away Label.

XS-2XL


hot pink


red


turquoise


heather
gray


military
green


midnight
navy


white


black



**3533 | WOMEN'S SPANDEX
JERSEY TANK**

Spandex Jersey. 40 single 145g/4.3oz 57% Combed Ring-Spun Cotton 38% Poly 5% Spandex. Soft spandex jersey has great stretch and recovery. Self-fabric binding. Side seamed. Figure hugging silhouette. Scoop front and back neckline. Satin label.

XS-2XL



**6633 | WOMEN'S SPANDEX
JERSEY RACERBACK TANK**

Spandex Jersey. 40 single 145g/4.3oz 57% Combed Ring-Spun Cotton 38% Poly 5% Spandex. Soft spandex jersey has great stretch and recovery. Self-fabric binding. Side seamed. Fitted silhouette. Satin label.

XS-2XL



MOCK TWIST



ATHLEISURE VIBES: FROM STUDIO TO STREET.

SOFT AND SILKY LOOK FROM THE FAVORITE RING-SPUN/POLY BLEND.
PRINTERS PREFERRED FABRIC FOR SCREEN-PRINTING AND HEAT TRANSFER.



2050 | MEN'S MOCK TWIST RAGLAN CREW

Mock Twist Jersey. 20 single 175g/5.1oz 60% Combed Ring-Spun Cotton 40% Poly. Athleisure look with softness of a ring-spun/poly blend. Side seamed. Raglan sleeve with contrast flat-lock top stitch. Self-binding collar. Tear away label.

S-3XL



tech
pink



tech
maroon



heather
gray



indigo



forest
green



black



tech red



tech royal



2021 | UNISEX MOCK TWIST RAGLAN HOODY

Mock Twist Jersey. 20 single 175g/5.1oz 60% Combed Ring-Spun Cotton 40% Poly. Athleisure look with the softness of a ring-spun/poly blend. Slightly relaxed athletic fit. Curved bottom hem with drop tail and side slit. Side seamed. Tear away label.

XS-3XL



tech
pink



tech
maroon



heather
gray



indigo



forest
green



black



2022 | UNISEX MOCK TWIST SHORT SLEEVE HOODY

Mock Twist Jersey. 20 single 175g/5.1oz 60% Combed Ring-Spun Cotton 40% Poly. Athleisure look with the softness of a ring-spun/poly blend. Slightly relaxed athletic fit. Curved bottom hem with drop tail and side slit. Side seamed. Tear away label.

XS-3XL



tech
pink



tech
maroon



heather
gray



indigo



forest
green



black

INSPIRED DYE



(left to right): 7433, 7451, 7401, 7410 & 7410

LIVED-IN LOOK AND FEEL GARMENT DYE.

SOFT SHADES AND SLIGHT COLOR VARIATION GIVING EACH SHIRT UNIQUE CHARACTER.
PRINTERS PREFERRED FABRIC FOR SCREEN-PRINTING.



**7433 | UNISEX INSPIRED DYE
TANK**

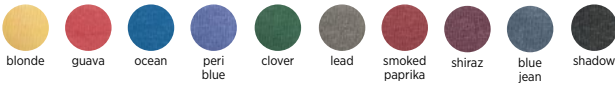
Inspired Dye. 24 single 175g/5.1oz 100% Combed Ring-Spun Cotton. Garment dyed. Side seamed. Self-fabric binding. Tear away label.

XS-3XL

**7415 | UNISEX INSPIRED DYE
POCKET CREW**

Inspired Dye. 24 single 175g/5.1oz 100% Combed Ring-Spun Cotton. Garment Dyed. 1x1 baby rib set-in collar with front cover stitch. Side seamed. Twill tape at back neck. Tear away label.

XS-3XL





**7451 | UNISEX INSPIRED DYE
L/S POCKET CREW**

Inspired Dye. 24 single 175g/5.1oz 100% Combed Ring-Spun Cotton. Garment Dye. 1x1 baby rib set-in collar with front cover stitch and cuffs. Side seamed. Twill tape at back neck. Tear away label.

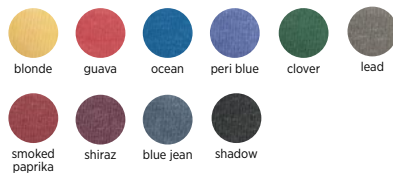
XS-3XL



7410 | UNISEX INSPIRED DYE CREW

Inspired Dye. 24 single 175g/5.1oz 100% Combed Ring-Spun Cotton. Garment Dyed. 1x1 baby rib set-in collar with front cover stitch. Side seamed. Twill tape at back neck. Tear away label.

XS-3XL





7401 | UNISEX INSPIRED DYE L/S CREW

Inspired Dye. 24 single 175g/5.1oz 100% Combed Ring-Spun Cotton. Garment dyed. 1x1 baby rib set-in collar with front cover stitch and cuffs. Side seamed. Twill tape at back neck. Tear away label.

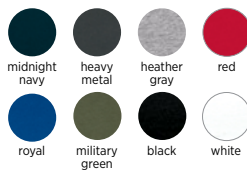
XS-3XL



7410S | UNISEX POWER CREW

Midweight Jersey. 100% Combed Ring-Spun Cotton. 24 single 175g/5.1oz Pre-washed fabric. Super soft ring-spun cotton adds to the unique quality of this mid-weight cotton tee. 1x1 baby rib set-in collar with front cover stitch. Double needle top-stitch around armholes. Side seamed. Dye-to-match twill tape at back neck. Tear away label.

XS-3XL



WAFFLE THERMAL



PREMIUM QUALITY MADE TO LAST.

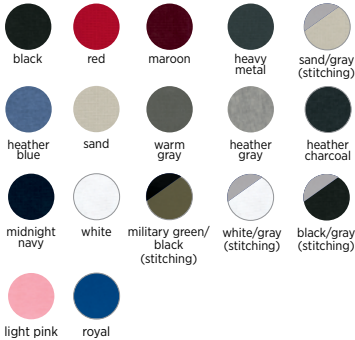
SOFT AND WARM, LIGHTWEIGHT WITH A SMOOTH AND SUPPLE HAND.
PRINTERS PREFERRED FABRIC FOR SCREEN-PRINTING AND HEAT TRANSFER.



8201 | UNISEX THERMAL L/S CREW

Waffle Thermal. 36 single 190g/5.6oz 60% Combed Ring-Spun Cotton 40% Poly. Incredibly soft and warm micro-waffle thermal. Smooth print surface. Self-fabric neck. 1x1 baby rib cuff. Side seamed. Flat-lock stitched seams and hem. Contrast stitch offerings noted. Tear away label.

XS-2XL



8221 | UNISEX THERMAL HOODY

Waffle Thermal. 36 single 190g/5.6oz 60% Combed Ring-Spun Cotton 40% Poly. Incredibly soft and warm micro-waffle thermal. Smooth print surface. Self-fabric unlined hood. 1x1 baby rib cuff. Side seamed. Flat-lock stitched seams and curved hem. Contrast stitch offerings noted. Tear away label.

XS-3XL



BEACH FLEECE



9000

LIFE'S A BEACH.

SOFT AND WARM, LIGHTWEIGHT WITH A SMOOTH AND SUPPLE HAND.
PRINTER'S PREFERRED FABRIC FOR SCREEN-PRINTING AND HEAT TRANSFER.



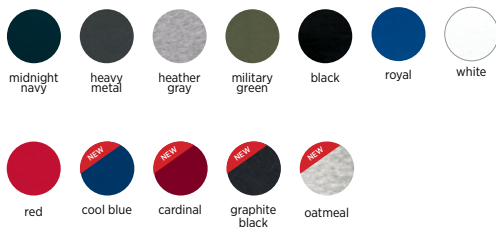
9600



9000 | UNISEX FRENCH TERRY L/S CREW

Midweight French Terry. 30 single 180g/5.3oz. 60% Cotton 40% Poly. Raglan sleeve, 1x1 ribbing at collar, waistband and cuffs, classic v-notch neck detail. Tear away label.

XS-3XL





9601 | UNISEX FRENCH TERRY ZIP HOODY

Midweight French Terry. 30 single 180g/5.3oz. 60% Cotton 40% Poly. Contrasting and matching jersey lined hood and flat drawcord, metal eyelets, 1x1 ribbing at cuffs and waistband. Tear away label.

XS-3XL

Colors: body/hood liner & drawcord



heather gray/
heather gray



white/
heather gray



royal/
heather gray



midnight navy/
heather gray



heavy metal/
heavy metal



black/
black



black/
gold



black/
red



9301 | UNISEX FRENCH TERRY PULLOVER HOODY

Midweight French Terry. 30 single 180g/5.3oz. 60% Cotton 40% Poly. Contrasting and matching jersey lined hood and flat drawcord, metal eyelets, 1x1 ribbing at cuffs and waistband. Tear away label.

XS-3XL



Colors: body/hood liner & drawcord



heather gray/
kelly green



heather
gray/royal



heather
gray/black



heather gray/
midnight navy



white/
heather gray



black/
desert pink



military
green/black



red/black



midnight navy/
heather gray



black/heather
gray



black/red



black/gold



black/
turquoise



black/black



heavy metal/
heavy metal



royal/gold



9600 | UNISEX DENIM FLEECE ZIP HOODY

Denim fleece. 53% Cotton 47% Poly, 7.4oz heather denim-inspired fleece. Exposed premium antique brass YKK zipper, drawcord, 1x1 solid color ribbing at cuffs and waist. Tear away label.

XS-3XL



black



navy



plum



military
green



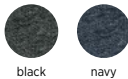
turquoise



9800 | MEN'S DENIM FLEECE JOGGER

Denim fleece. 53% Cotton 47% Poly, 7.4oz heather denim-inspired fleece. Side pockets, back pocket, solid color ribbed waistband and bottom cuffs, super-soft fleece. Tear away label.

S-2XL



black

navy

80/20 FLEECE



9303

COMFORT AND STYLE.

EXCEPTIONAL SOFTNESS AND STRENGTH.
SCREEN-PRINTING, DTG DISCHARGE, HEAT-TRANSFER



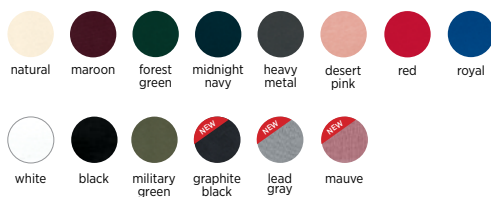
9001



9303 | UNISEX 80/20 FLEECE PULLOVER HOODY

80/20 Fleece. 80% Cotton 20% Poly. 30 single 250g/7.4oz. Front pocket, natural drawcord, jersey lined hood, ribbed cuffs and band, locker patch for printable label, 100% cotton face. Tear away label.

XS-3XL





9001 | UNISEX 80/20 FLEECE POCKET CREW

80/20 Fleece. 80% Cotton 20% Poly. 30 single 250g/7.4oz. Front Pocket, locker patch for printable label, 100% cotton face. Tear away label.

XS-3XL





9602 | UNISEX 80/20 FLEECE ZIP HOODY

80/20 Fleece. 80% Cotton 20% Poly. 30 single 250g/7.4oz. Exposed premium antique brass YKK zipper, natural drawcord, jersey lined hood, ribbed cuffs and band, locker patch for printable label. 100% cotton face. Tear away label.

XS-3XL





9103 | YOUTH 80/20 FLEECE ZIP HOODY

80/20 Fleece. 80% Cotton 20% Poly. 30 single 250g/7.4oz. No drawcord, ribbed cuffs and band, kissing zipper with dyed to match neck tape, locker patch for printable label. 100% cotton face. Tear away label.

XS(4/5) - XL(14/16)



PCH FLEECE



BEST TRAVEL FLEECE COMPANION.

LIGHTWEIGHT, KEEPING YOU COMFORTABLE ON LONG OR SHORT JOURNEYS.
PRINTERS PREFERRED FABRIC FOR SCREEN-PRINTING.



9302 & 9002



9300 | UNISEX PCH PULLOVER HOODY

PCH Fleece. 30 single 250g/7.4oz 60% Cotton 40% Poly. Heathered fleece with unique pockets for a clean finished look. Metal eyelets, drawcord, 1x1 ribbing at cuffs, unisex fit. Tear away label.

XS-3XL





9603 | WOMEN'S PCH RAGLAN ZIP HOODY

PCH Fleece. 30 single 250g/7.4oz Heathered Fleece. 60% Cotton 40% Poly. Natural drawcord and exposed premium antique brass YKK zipper, jersey lined hood. Tear away label.

XS-2XL



heather
black

heather
gray

heather
bay blue

heather
cardinal

heather
military
green



2021 NEW STYLE

**9302 | UNISEX PCH FLEECE
PULLOVER HOODY**

PCH Fleece. 30 Singles. 250g/7.4oz Heathered Fleece. 60% Cotton 40% Poly. Lightweight with matching drawstrings with front pocket, ribbed cuffs and band. Locker patch. Tear away label.

XS-3XL



heather black

heather gray

heather cardinal

heather military green



heather midnight navy

oatmeal

heather slate blue



2021 NEW STYLE

**9002 | UNISEX PCH
PULLOVER CREW**

PCH Fleece. 30 single 250g/7.4oz. 60% Cotton 40% Poly. Heathered Fleece. A classic sweatshirt construction, a comfortable relaxed fit with just the right amount of weight to keep you cozy. Features a ribbed crew neck with ribbed cuffs, hem and locker patch. Tear away label.

XS-3XL



heather maroon

heather bay blue

heather teal

heather military green

heather midnight navy



oatmeal

heather black

heather gray

heather cardinal



9700 | UNISEX PCH BOMBER JACKET

PCH Heathered Fleece. 60% Cotton 40% Poly. 30 single 250g/7.4oz. Solid black ribbing on neck and cuffs, raglan sleeve, locker patch for printable label. Exposed premium antique brass YKK zipper. Tear away label.

XS-3XL



heather
gray



heather
military
green



heather
black

INDEX

NLA DNA	2	6233: Unisex CVC Tank	31
Table of Contents	3-4	6240: Unisex CVC V	32
2021 New Styles	5	6251: Unisex CVC 3/4 Sleeve Raglan	34
Style Index	6-7	6310: Unisex Youth Tri-blend Crew	41
Brand Pillars	8	6333: Unisex Muscle Tank	81
Wholesale Partner Network	9	6338: Women's Gathered Racerback Tank	82
Social & Eco Ethos	10	6360: Women's Roll Sleeve Dolman	80
Sustainable Commitment	11	6407: Unisex Sueded Snow Crew	54
Brand Timeline	12-13	6410: Unisex Sueded Crew	53
1510: Women's Ideal Tee	72	6411: Unisex Sueded L/S Crew	57
1530: Women's Ideal Flow Tee	74	6440: Unisex Sueded V	55
1533: Women's Ideal Racerback Tank	70	6480: Women's Sueded V	55
1534: Women's Ideal Color block Racerback Tank	75	6491: Unisex Sueded Zip Hoody	56
1540: Women's Ideal V	71	6610: Women's CVC Boyfriend Tee	30
1560: Women's Ideal Dolman	73	6633: Women's Spandex Jersey Racerback Tank	83
1580: Women's Ideal Crop Tee NEW	76	6640: Women's CVC Deep V	33
1800: Unisex Ideal Heavyweight Crew	69	6710: Women's Tri-Blend Tee	40
1801: Unisex Ideal Heavyweight L/S Crew NEW	69	6730: Women's Tri-Blend Scoop	49
2021: Unisex Mock Twist Raglan Hoody	86	6731: Women's Tri-Blend L/S Scoop	46
2022: Unisex Mock Twist S/S Hoody	87	6733: Women's Tri-Blend Racerback Tank	44
2050: Men's Mock Twist Raglan Crew	85	6734: Women's Tri-Blend Racerback Tank Dress	45
3110: Toddler Cotton Tee	27	6740: Women's Tri-Blend Deep V	43
3200: Men's Cotton V	20	6760: Women's Tri-Blend Dolman	48
3310: Youth Cotton Crew	27	6933: Women's French Terry Racerback Tank	78
3312: Youth CVC Crew	37	6951: Women's French Terry 3/4 Raglan	79
3352: Youth CVC 3/4 Raglan	35	7401: Unisex Inspired Dye L/S Crew	91
3533: Women's Spandex Jersey Tank	83	7410: Unisex Inspired Dye Crew	90
3600: Unisex Cotton Crew	15	7410S: Unisex Power Crew	91
3600A: Unisex USA Cotton Crew	59	7415: Unisex Inspired Dye Pocket Crew	89
3601: Men's Cotton L/S	17	7433: Unisex Inspired Dye Tank	89
3602: Men's Cotton Long Body Crew	19	7451: Unisex Inspired Dye L/S Pocket Crew	90
3604: Unisex Cotton Ringer Tee	24-25	7481S: Women's Cropped L/S Tee	77
3605: Unisex Cotton Pocket Crew	19	8201: Unisex Thermal L/S Crew	93
3633: Cotton Tank	18	8221: Unisex Thermal Hoody	93
3650: Unisex Cotton Raglan Tee	22-23	9000: Unisex French Terry Raglan Crew	96
3710: Girl's Princess Cotton Tee	26	9001: Unisex 80/20 Fleece Pocket Crew	105
3712: Girl's Princess CVC Tee	36	9002: Unisex PCH Pullover Crew NEW	112
3900: Women's Cotton Boyfriend Tee	16	9103: Unisex 80/20 Youth Fleece Hoody	107
3900A: Women's USA Cotton Boyfriend Tee	59	9300: Unisex PCH Pullover Hoody	110
3904: Women's Cotton Ringer Tee	24-25	9301: Unisex French Terry Pullover Hoody	98-99
3940: Women's Relaxed V	21	9302: Unisex PCH Fleece Pullover Hoody NEW	112
4210: Unisex Eco Performance Tee	62	9303: Unisex 80/20 Fleece Pullover Hoody	104
4212: Youth Eco Performance Crew	63	9600: Unisex Denim Fleece Zip Hoody	100
4240: Women's Eco Performance V	63	9601: Unisex French Terry Zip Hoody	97
4600: Unisex Eco Heavyweight Tee	61	9602: Unisex 80/20 Fleece Zip Hoody	106
5013: Women's Festival Muscle Tank	67	9603: Women's PCH Zip Hoody	111
5030: Women's Festival Scoop	66	9700: Unisex PCH Bomber Jacket	113
5033: Women's Festival Tank	67	9800: Men's Denim Fleece Jogger	101
5040: Women's Festival Sleeveless V	66		
5080: Women's Festival Cali Crop	67		
6010: Unisex Tri-Blend Crew	39		
6010A: Unisex USA Tri-Blend Crew	59		
6021: Unisex Tri-Blend L/S Hoody	50		
6040: Men's Tri-Blend V	42		
6051: Unisex Tri-Blend 3/4 Raglan	51		
6071: Unisex Tri-Blend L/S Crew	47		
6072: Men's Tri-Blend L/S Crew	50		
6200: Unisex Poly/Cotton Crew	65		
6210: Unisex CVC Crew	29		

SIZE GUIDE

Gender	XS	S	M	L	XL	2XL	3XL	4XL
Men's/Unisex (Chest)	33"-35"	35" - 38"	38" - 41"	43" - 44"	45" - 48"	48" - 52"	53.5" - 56"	60"
Women's Fitted (Chest)		29.5"	31.5"	33.5"	36.5"	39.5"		
Women's Fitted (Size)		0 - 2	2 - 4	4 - 6	8 - 10	12		
Women's Relaxed/Classic (Chest)	30"	32"	34"	36"	39"	42"	45.5"	
Women's Relaxed/Classic (Size)	0 - 2	2 - 4	4 - 6	8 - 10	12 - 14	14 - 16	18 - 20	
Women's Relaxed 2019 (Chest)	33"	35"	37"	39"	42"	45"	48"	
Women's Relaxed 2019 (Size)	0-2	2-4	4-6	8-10	12-14	14-16	18-20	
Women's Dolman/Flowy (Chest)	35"	37"	38"	40"	44"	47"	50"	
Women's Dolman/Flowy (Size)	2 - 6	4 - 8	6 - 10	8 - 12	12 - 16	18 - 20	20 - 24	
Women's Oversize Fit (Chest)	43"	45"	47"	49"	52"	55"		
Women's Oversize Fit (Size)	2-6	4-8	6-10	8-12	12-16	18-20	20-24	
Boys/Youth (Size)	4/5	6/7	8	10/12	14/16			
Girls' (Size)	3/4	6/6X	7/8	10/12	14/16			
Toddler (Size)	2T	3T	4T					
Men's Joggers (Waist)		29"	31"	33"	35"	37"		
Men's Joggers (Inseam)		30"	30"	30"	30.5"	31"		
Women's Joggers (Waist)	26.5"	28.5"	30.5"	32.5"	34.5"	36.5"		
Women's Joggers (Inseam)	27.75"	28"	28.25"	28.5"	28.75"	29"		

UNISEX FIT

SIZE EQUIVALENT	XS	S	M	L	XL	2XL	3XL	4XL
Men's	XS	S	M	L	XL	2XL	3XL	4XL
Women's	S	M	L	XL	2XL	3XL	N/A	N/A

Please visit www.nextlevelapparel.com for any product inquiries.

