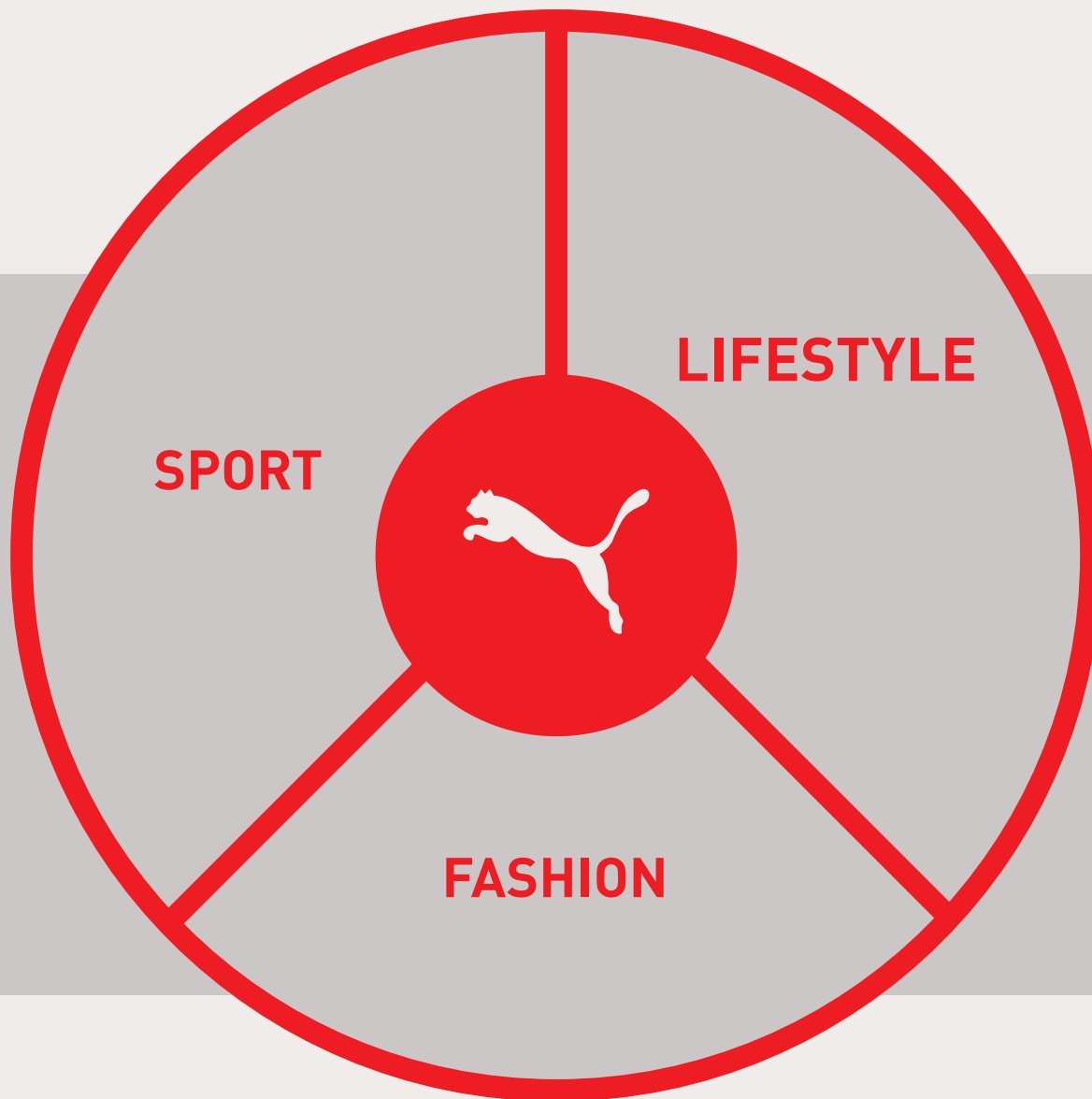


## IMPRINTABLE APPAREL AND ACCESSORIES



# GOLF & SPORT







**PUMA lives at the intersection of Sport, Lifestyle and Fashion. Outfit your team for peak performance in our collection of Golf and Sport styles designed for winning. Next-level comfort, unrivaled design and technically-superior fabrics go into every piece. Each one is imprintable so your brand stands front and centre.**



**GOLF** 

Lifestyle - 4  
Product Info - 22



**SPORT** 

Lifestyle - 14  
Product Info - 29

# GOLF

Setting trends is par for the course. Our feature-packed polos are the perfect blend of stretch comfort, dryCELL moisture-wicking properties and classic style. Complete your look with our sweat-resistant caps, roomy sports bags and warm zips ups. Companion pieces are available for some styles.

## **DRYCELL**

Technical fabrics wick moisture away from the skin to help keep you dry and comfortable.

## **WARMCELL**

Thermal Insulation traps heat close to the body to help keep you warm in cool conditions.



FOREVER FASTER.





**Rickie Fowler**

596920 MEN'S FUSION POLO  
Product Details on Page 23





596799 MEN'S ICON GOLF POLO / 596800 LADIES' ICON GOLF POLO /  
22673 ADULT POUNCE ADJUSTABLE CAP





596801 MEN'S ICON HEATHER POLO



596802 LADIES' ICON HEATHER POLO



596807 MEN'S ICON QUARTER-ZIP / 22674 ADULT JERSEY STRETCH FIT CAP /  
77137 EXECUTIVE DUFFEL



596803 LADIES' ICON FULL-ZIP





596920 MEN'S FUSION POLO / 596921 LADIES' FUSION POLO





597223 MEN'S ROTATION STRIPE POLO / 597222 LADIES' ROTATION STRIPE SLEEVELESS POLO /  
22675 ADULT 110° SNAPBACK TRUCKER CAP



596804 MEN'S PERFORMANCE STRIPE POLO



597220 MEN'S GRILL-TO-GREEN POLO





597221 MEN'S SPOTLIGHT POLO



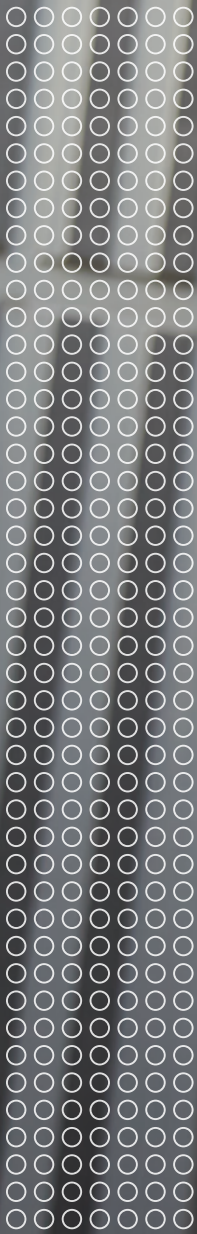
596805 MEN'S BONDED COLOURBLOCK POLO





596806 MEN'S FAIRWAY FULL-ZIP / 597160 LADIES' FAIRWAY FULL-ZIP /  
596808 MEN'S BASELAYER / 77138 EXECUTIVE BACKPACK





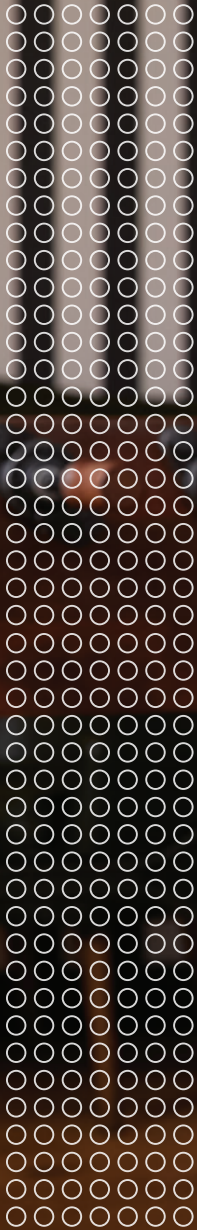




# SPORT

Whatever your style, PUMA fashion apparel has you covered from head to toe. Showcase your brand on our essential collection of trend-setting tees, shorts, track pants, outerwear and more – perfect for special events, traveling or game day.





582006 ADULT PUMA ESSENTIAL LOGO T-SHIRT





582364 ADULT PUMA ICONIC T7 TRACK JACKET





596989 ADULT PUMA ESSENTIAL LOGO PANT



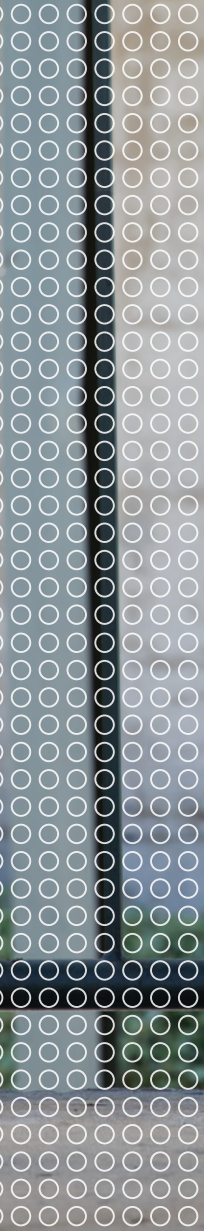
582008 ADULT PUMA ESSENTIAL SWEAT BERMUDA SHORT





596990 PUMA ESSENTIAL FLEECE HOODY





597021 ADULT PUMA P48 TRACK JACKET





582009 ADULT PUMA ACE WINDBREAKER



582007 ADULT PUMA ESSENTIAL PADDED VEST



DRYCELL

**596799 MEN'S ICON GOLF POLO**

100% polyester. Moisture-wicking. Four-way stretch. Ultra-lightweight. Three-button placket.

SIZES: S-4XL  
\$50.00 (C)



DRYCELL

**596800 LADIES' ICON GOLF POLO**

100% polyester. Moisture-wicking. Four-way stretch. Ultra-lightweight. V-neck.

SIZES: XS-3XL  
\$50.00 (C)

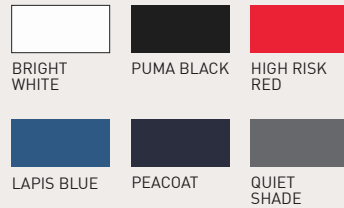
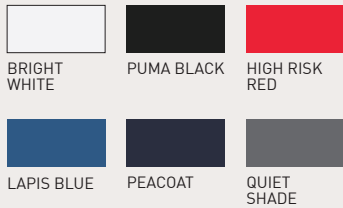


DRYCELL

**596801 MEN'S ICON HEATHER POLO**

100% polyester. Space-dyed heather fabric. Moisture-wicking. Mechanical stretch. Ultra-lightweight. Three-button placket.

SIZES: S-4XL  
\$65.00 (C)



All prices subject to change without notice.







DRYCELL

**596802 LADIES' ICON HEATHER POLO**

100% polyester. Space-dyed heather fabric. Moisture-wicking. Mechanical stretch. Ultra-lightweight. V-neck.

SIZES: XS-3XL  
\$65.00 (C)

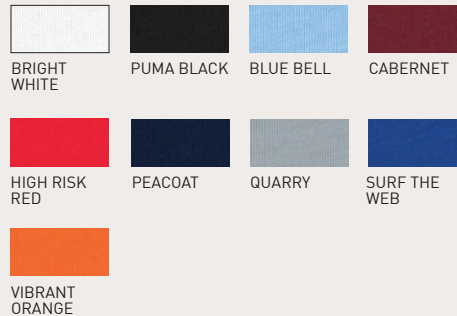


DRYCELL

**596920 MEN'S FUSION POLO**

85% polyester, 15% cotton. Subtle heather texture. Moisture-wicking. Mechanical stretch. Ultrasoft, cottony hand feel with the performance of polyester. Three-button placket.

SIZES: S-4XL  
\$65.00 (C)

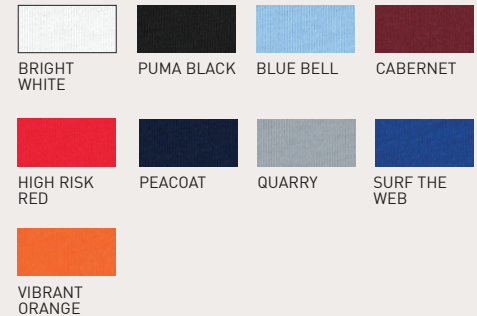


DRYCELL

**596921 LADIES' FUSION POLO**

85% polyester, 15% cotton. Subtle heather texture. Moisture-wicking. Mechanical stretch. Ultrasoft, cottony hand feel with the performance of polyester. Elongated five-button placket.

SIZES: XS-3XL  
\$65.00







DRYCELL

**597223 MEN'S ROTATION STRIPE POLO**

100% polyester. Moisture-wicking. Mechanical stretch. Three-button placket. Subtle heathered stripe.

SIZES: S-3XL  
\$75.00 (C)



PUMA BLACK    HIGH RISK RED    PEACOAAT



QUARRY    SURF THE WEB



DRYCELL

**597222 LADIES' ROTATION STRIPE SLEEVELESS POLO**

100% polyester. Moisture-wicking. Mechanical stretch. Elongated five-button placket. Subtle heathered stripe.

SIZES: XS-2XL  
\$65.00 (C)



PUMA BLACK    HIGH RISK RED    PEACOAAT



QUARRY    SURF THE WEB



DRYCELL

**596804 MEN'S PERFORMANCE STRIPE POLO**

100% polyester. Moisture-wicking. Mechanical stretch. Subtle heather/solid striped fabric.

SIZES: S-3XL  
\$82.00 (C)



PUMA BLACK HEATHER    PEACOAAT HEATHER    QUARRY HEATHER



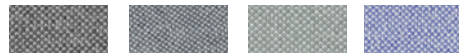


DRYCELL

**597220 MEN'S GRILL-TO-GREEN POLO**

100% polyester Oxford piqué. Moisture-wicking. Mechanical stretch. Branded three-snap placket.

SIZES: S-3XL  
\$75.00 (C)



PUMA BLACK HEATHER    PEACOAT HEATHER    QUARRY HEATHER    SURF THE WEB HEATHER



DRYCELL

**597221 MEN'S SPOTLIGHT POLO**

92% polyester, 8% spandex. Moisture-wicking. Four-way stretch. Engineered yarn-dyed stripe on front panel.

SIZES: S-3XL  
\$82.00 (C)



LAPIS BLUE/ QUARRY    PEACOAT/ HIGH RISK RED    QUARRY/ PUMA BLACK



DRYCELL

**596805 MEN'S BONDED COLOURBLOCK POLO**

100% polyester. Moisture-wicking. Four-way stretch. Branded three-snap placket. Bonded colourblocking on front panel.

SIZES: S-3XL  
\$82.00 (C)



BRIGHT WHITE/ QUARRY    LAPIS BLUE/ PEACOAT    QUIET SHADE/ PUMA BLACK





DRYCELL

**596807 MEN'S ICON QUARTER-ZIP**

100% polyester. Moisture-wicking. Four-way stretch. Ultra-lightweight. Contrast covered reverse coil zipper.

SIZES: S-4XL  
\$65.00 (C)



PUMA BLACK    HIGH RISK RED    LAPIS BLUE



PEACOAT    QUIET SHADE



DRYCELL

**596803 LADIES' ICON FULL-ZIP**

100% polyester. Moisture-wicking. Four-way stretch. Ultra-lightweight. Contrast covered reverse coil zipper.

SIZES: XS-3XL  
\$65.00 (C)



PUMA BLACK    HIGH RISK RED    LAPIS BLUE



PEACOAT    QUIET SHADE



WARMCELL

**596806 MEN'S FAIRWAY FULL-ZIP**

100% midweight polyester fleece. Moisture-wicking. Mechanical stretch. Contrast stitching and #5 Vislon zipper.

SIZES: S-4XL  
\$100.00 (C)



PUMA BLACK    QUIET SHADE



WARMCELL



**597160 LADIES' FAIRWAY FULL-ZIP**

100% midweight polyester fleece. Moisture-wicking. Mechanical stretch. Tonal stitching and #3 Vislon zipper.

SIZES: XS-3XL  
\$100.00 (C)



PUMA BLACK

QUIET  
SHADE

DRYCELL



**596808 MEN'S BASELAYER**

89% polyester, 11% spandex. Moisture-wicking. Four-way stretch. Brushed-back for warmth.

SIZES: S-4XL  
\$65.00 (C)



BRIGHT  
WHITE

PUMA BLACK

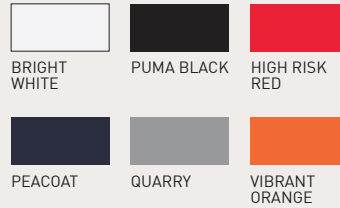




**22673 ADULT POUNCE ADJUSTABLE CAP**

100% polyester. Moisture-wicking performance sweatband. Precurve, 6-panel cap. Hair-friendly hook and loop closure adjustable strap.

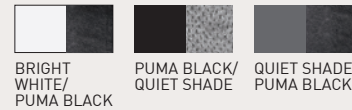
SIZES: ONE SIZE  
\$25.00 (C)



**22674 ADULT JERSEY STRETCH FIT CAP**

Front panels: 100% polyester. Back panels: 93% polyester, 7% elastane. Moisture-wicking performance sweatband. Precurve, 6-panel cap.

SIZES: S/M-L/XL  
\$27.50 (C)



**22675 ADULT 110® SNAPBACK TRUCKER CAP**

Front panels: 96% polyester, 4% elastane. Back panels: 100% polyester. Moisture-wicking performance sweatband. Slight curve, 6-panel cap. Flexfit 110® snapback.

SIZES: ONE SIZE  
\$27.50 (C)



**77138 EXECUTIVE BACKPACK**

100% polyester. Top cinch closure into main compartment. External zippered pocket. Side zipper access into laptop compartment. Ventilated back panel and shoulder straps. Side mesh pocket.

SIZES: ONE SIZE  
\$120.00 (C)



**77137 EXECUTIVE DUFFEL**

100% polyester. Two-way zipper into main compartment. Front external zippered pocket. Side mesh pocket and side zippered shoe pocket with metal eyelets for ventilation. Top padded grab handle and shoulder strap.

SIZES: ONE SIZE  
\$75.00 (C)







**582006 ADULT PUMA ESSENTIAL LOGO T-SHIRT**

5.6 oz./yd<sup>2</sup> / 160 gsm., 100% cotton. No. 1 logo print. Ribbed crewneck. Regular fit.

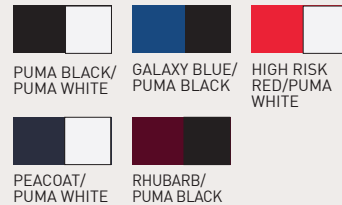
SIZES: XS-4XL  
\$20.00 (C)



**582364 ADULT PUMA ICONIC T7 TRACK JACKET**

59% polyester, 41% cotton terry. Archive No. 1 logo rubber print. Full-zip closure with stand-up collar. T7 panel inserts. Front pockets for storage. Ribbed cuffs and hem.

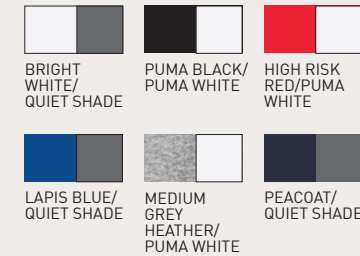
SIZES: XS-4XL  
\$90.00 (C)



**597021 ADULT PUMA P48 FLEECE TRACK JACKET**

61% cotton, 39% polyester fleece. PUMA® embroidered cat logo. Full-zip closure with stand-up collar. Front pockets for storage. Ribbed cuffs and hem.

SIZES: XS-4XL  
\$70.00 (C)







**596990 PUMA ESSENTIAL FLEECE HOODY**

66% cotton, 34% polyester fleece. No. 1 logo raised pigment print. Hood with drawcord for an adjustable fit. Pouch pocket for storage. Ribbed cuffs and hem.

SIZES: XS-4XL  
\$58.00 (C)



PUMA BLACK/  
SMOKED  
PEARL



HIGH RISK  
RED/QUIET  
SHADE



MEDIUM GREY  
HEATHER/  
PUMA BLACK



PEACOAT/  
QUIET SHADE



**596989 ADULT PUMA ESSENTIAL LOGO PANT**

66% cotton, 34% polyester fleece. No. 1 logo screened pigment print. Side pockets for storage. Elastic cuffs and waistband with internal drawcord.

SIZES: XS-4XL  
\$58.00 (C)



PUMA BLACK/  
SMOKED  
PEARL



MEDIUM GREY  
HEATHER/  
PUMA BLACK



PEACOAT/  
SMOKED  
PEARL



**582008 ADULT PUMA ESSENTIAL SWEAT BERMUDA SHORT**

68% cotton, 32% polyester terry. No. 1 logo screened pigment print. Side pockets for storage. Elastic waistband with internal drawcord. 10" inseam.

SIZES: XS-4XL  
\$32.00 (C)



PUMA BLACK/  
SMOKED  
PEARL



MEDIUM GREY  
HEATHER/  
PUMA BLACK



PEACOAT/  
SMOKED  
PEARL



### 582009 ADULT PUMA ACE WINDBREAKER

100% polyester woven with 100% polyester taffeta lining. PUMA® cat logo on right chest. Full zipper with garage at the chin for comfort. Mesh-lined to increase the comfort. Two hand pockets with zipper for secure storage.

SIZES: XS-3XL  
\$75.00 (C)



PUMA BLACK/  
QUIET SHADE    HIGH RISK  
RED/PUMA  
BLACK    LAPIS BLUE/  
PEACOAT



### 582007 ADULT PUMA ESSENTIAL PADDED VEST

100% polyester woven with 100% polyester taffeta lining. PUMA® cat logo pigment print on front. PUMA® logo on back. Regular fit.

SIZES: XS-3XL  
\$95.00 (C)



PUMA BLACK/  
QUIET SHADE    QUIET SHADE/  
PUMA BLACK

## FIT GUIDE

GENDER	XXS	XS	S	M	L	XL	2XL	3XL	4XL	5XL
Men's Polos (Chest)	37"	39.5"	42"	44"	47"	50.5"	53.5"	56.5"	60"	63"
Men's Polos (Length)	27"	28"	29"	30"	31"	32"	33"	34"	35"	35"
Men's Layering (Chest)	37"	39.5"	41.5"	44"	47"	50.5"	53.5"	56.5"	60"	63"
Men's Layering (Length)	26"	27"	28"	29"	30"	31"	32"	33"	34"	35"
Ladies' Polos (Chest)	32.5"	34"	35.5"	37.5"	40"	41"	43.5"	46"	48.5"	51"
Ladies' Polos (Length)	24.5"	25"	25.5"	26"	26.5"	27"	27.5"	28"	28.5"	29"
Ladies' Layering (Chest)	32.5"	34"	36"	38"	40"	42"	44"	46.5"	49"	51"
Ladies' Layering (Length)	26"	26.5"	27"	27.5"	28"	28.5"	29"	29.5"	30"	30.5"

Technical material constructions are engineered to help protect against windy conditions and keep you dry and warm. WindCELL - highly functional materials provide you a durable yet breathable protection against wind chill, while helping you to maintain your body temperature at a comfortable level during exercise.





GOLF & SPORT

IMPRINTABLE APPAREL AND ACCESSORIES



alphabroder.ca  
866.274.2489

